

RND1 Rabbit pAb

CatalogNo: YN1226

Key Features

Host Species

- Rabbit

Reactivity

- Human, Mouse

Applications

- WB, ELISA

MW

- 25kD (Observed)

Isotype

- IgG

Storage

Storage* -15°C to -25°C/1 year (Do not lower than -25°C)

Formulation Liquid in PBS containing 50% glycerol, 0.5% BSA and 0.02% sodium azide.

Recommended Dilution Ratios

WB 1:500-2000

ELISA 1:5000-20000

Basic Information

Clonality Polyclonal

Immunogen Information

Immunogen Synthesized peptide derived from human protein . at AA range: 140-220

Specificity RND1 Polyclonal Antibody detects endogenous levels of protein.

Target Information

Gene name RND1 RHO6

Protein Name Rho-related GTP-binding protein Rho6 (Rho family GTPase 1) (Rnd1)

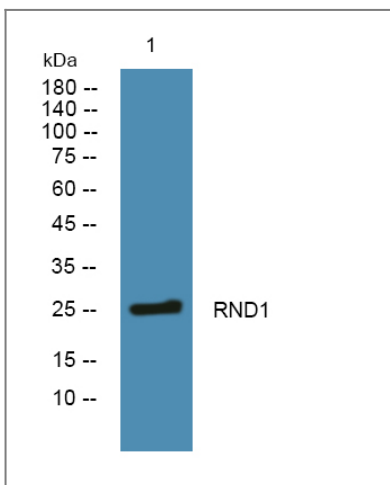
Organism	Gene ID	UniProt ID
Human	27289;	Q92730;
Mouse		Q8BLR7;

Cellular Localization Cell membrane ; Lipid-anchor ; Cytoplasmic side . Cytoplasm, cytoskeleton .

Tissue specificity Mostly expressed in brain and liver.

Function Function:Lacks intrinsic GTPase activity. Has a low affinity for GDP, and constitutively binds GTP. Controls rearrangements of the actin cytoskeleton. Induces the Rac-dependent neuritic process formation in part by disruption of the cortical actin filaments. Causes the formation of many neuritic processes from the cell body with disruption of the cortical actin filaments.,similarity:Belongs to the small GTPase superfamily. Rho family.,subunit:Binds GRB7 and PLXNB1. Interacts with UBXD5.,tissue specificity:Mostly expressed in brain and liver.,

Validation Data



Western blot analysis of lysates from SH-SY5Y cells, primary antibody was diluted at 1:1000, 4° over night

Contact information

Orders: order@immunoway.com
Support: tech@immunoway.com
Telephone: 877-594-3616 (Toll Free), 408-747-0185
Website: <http://www.immunoway.com>
Address: 2200 Ringwood Ave San Jose, CA 95131 USA



Please scan the QR code to access additional product information:
RND1 Rabbit pAb

