

ARHGF Rabbit pAb

CatalogNo: YN1222

Orthogonal Validated KD/KO Validated 

Key Features

Host Species

- Rabbit

Reactivity

- Human, Mouse

Applications

- WB, ELISA

MW

- 92kD (Observed)

Isotype

- IgG

Recommended Dilution Ratios

WB 1:500-2000

ELISA 1:5000-20000

Storage

Storage*

-15°C to -25°C/1 year(Do not lower than -25°C)

Formulation

Liquid in PBS containing 50% glycerol, 0.5% BSA and 0.02% sodium azide.

Basic Information

Clonality

Polyclonal

Immunogen Information

Immunogen

Synthesized peptide derived from human protein . at AA range: 560-640

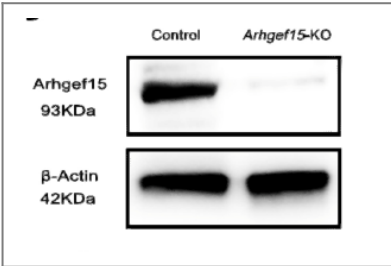
Specificity

ARHGF Polyclonal Antibody detects endogenous levels of protein.

Target Information

Gene name	ARHGEF15 KIAA0915		
Protein Name	Rho guanine nucleotide exchange factor 15 (Ephexin-5) (E5) (Vsm-RhoGEF)		
	Organism	Gene ID	UniProt ID
	Human	22899;	Q94989;
	Mouse		Q5FWH6;
Cellular Localization	Cell projection, dendrite . Expressed exclusively in dendrites of the developing hippocampus. .		
Tissue specificity	Expressed in the vascular smooth muscle of coronary artery.		
Function	Function:Specific GEF for RhoA activation and the regulation of vascular smooth muscle contractility.,PTM:Phosphorylated on tyrosine residues upon EFNA1 stimulation.,similarity:Contains 1 DH (DBL-homology) domain.,subunit:Interacts with EPHA4.,tissue specificity:Expressed in the vascular smooth muscle of coronary artery.,		

| Validation Data



ARHGEF15 is expressed in undifferentiated spermatogonia but is not required for spermatogenesis in mice Reproductive Biology Qi-En Yang WB Mouse testicular tissues

| Contact information

Orders: order@immunoway.com
Support: tech@immunoway.com
Telephone: 877-594-3616 (Toll Free), 408-747-0185
Website: http://www.immunoway.com
Address: 2200 Ringwood Ave San Jose, CA 95131 USA



Please scan the QR code to access additional product information:
ARHGF Rabbit pAb