

TIG3 Rabbit pAb

CatalogNo: YN1211

| Key Features

Host Species

- Rabbit

Reactivity

- Human

Applications

- WB,ELISA

MW

- 18kD (Observed)

Isotype

- IgG

| Recommended Dilution Ratios

WB 1:500-2000

ELISA 1:5000-20000

| Storage

Storage* -15°C to -25°C/1 year(Do not lower than -25°C)

Formulation Liquid in PBS containing 50% glycerol,0.5% BSA and 0.02% sodium azide.

| Basic Information

Clonality Polyclonal

| Immunogen Information

Immunogen Synthesized peptide derived from human protein . at AA range: 80-160

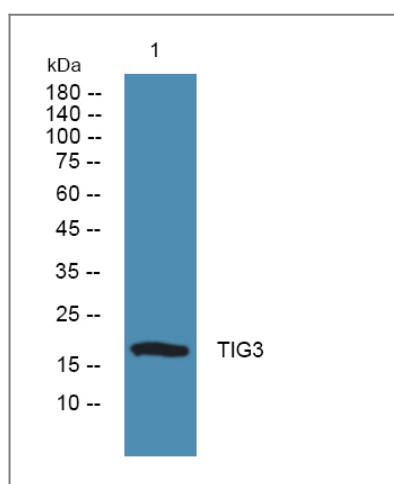
Specificity TIG3 Polyclonal Antibody detects endogenous levels of protein.

| Target Information

Gene name RARRES3 RIG1 TIG3

Protein Name	Retinoic acid receptor responder protein 3 (RAR-responsive protein TIG3) (Retinoid-inducible gene 1 protein) (Tazarotene-induced gene 3 protein)		
	Organism	Gene ID	UniProt ID
	Human	5920;	Q9UL19;
Cellular Localization	Membrane ; Single-pass membrane protein .		
Tissue specificity	Widely expressed.		
Function	Function:May be a growth regulator that mediates some of the growth suppressive effects of retinoids.,induction:By tazarotene.,similarity:Belongs to the H-rev107 family.,tissue specificity:Expressed in many tissues. Not expressed in heart, brain, and testis.,		

Validation Data



Western blot analysis of lysates from K562 cells, primary antibody was diluted at 1:1000, 4° over night

Contact information

Orders: order@immunoway.com
 Support: tech@immunoway.com
 Telephone: 877-594-3616 (Toll Free), 408-747-0185
 Website: <http://www.immunoway.com>
 Address: 2200 Ringwood Ave San Jose, CA 95131 USA



Please scan the QR code to access additional product information:
TIG3 Rabbit pAb