

RGS20 Rabbit pAb

CatalogNo: YN1202

Orthogonal Validated 

Key Features

Host Species

- Rabbit

Reactivity

- Human, Mouse

Applications

- WB, ELISA

MW

- 42kD (Observed)

Isotype

- IgG

Recommended Dilution Ratios

WB 1:500-2000**ELISA 1:5000-20000**

Storage

Storage*

-15°C to -25°C/1 year (Do not lower than -25°C)

Formulation

Liquid in PBS containing 50% glycerol, and 0.02% sodium azide.

Basic Information

Clonality

Polyclonal

Immunogen Information

Immunogen

Synthesized peptide derived from human protein . at AA range: 180-260

Specificity

RGS20 Polyclonal Antibody detects endogenous levels of protein.

Target Information

Gene name

RGS20 RGSZ1 ZGAP1

Protein Name Regulator of G-protein signaling 20 (RGS20) (Gz-selective GTPase-activating protein) (G(z)GAP) (Gz-GAP) (Regulator of G-protein signaling Z1) (Regulator of Gz-selective protein signaling 1)

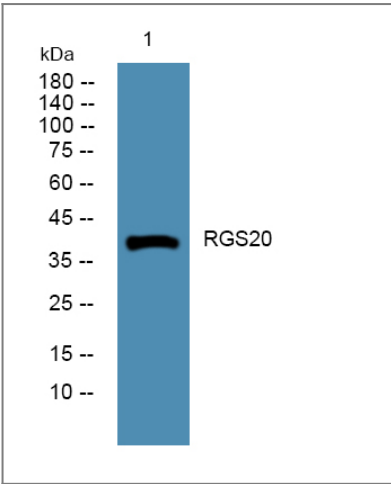
Organism	Gene ID	UniProt ID
Human	8601 ;	O76081 ;
Mouse		Q9QZB1 ;

Cellular Localization Membrane; Lipid-anchor. Nucleus. Cytoplasm. Shuttles between the cytoplasm/cell membrane and the nucleus. Anchored to the membrane through palmitoylation. .

Tissue specificity Isoform 5 is expressed in brain at high levels in the caudate nucleus and temporal lobe.

Function Function:Inhibits signal transduction by increasing the GTPase activity of G protein alpha subunits thereby driving them into their inactive GDP-bound form. Binds selectively to G(z)-alpha and G(alpha)-i2 subunits, accelerates their GTPase activity and regulates their signaling activities. The G(z)-alpha activity is inhibited by the phosphorylation and palmitoylation of the G-protein. Negatively regulates mu-opioid receptor-mediated activation of the G-proteins.,PTM:Fatty acylated. Heavily palmitoylated in the cysteine string motif.,PTM:N- and O-glycosylated in synapsomal membranes.,PTM:Serine phosphorylated in synapsomal membranes.,PTM:Sumoylated by SUMO1 and SUMO2 in synaptosomes. The sumoylated forms act as a scaffold for sequestering mu-opioid receptor-activated G(alpha) subunits.,similarity:Contains 1 RGS domain.,subcellular location:Shuttles between the cytoplasm/cell membrane and the nucleus (By similarity). Anchored to the membrane through palmitoylation.,subunit:Forms a complex with G(alpha)z/i2 subunits and mu-opioid receptors; the formation of this complex results in mu-opioid receptor desensitization. Interacts with OPRM1.,tissue specificity:In the brain, isoform 5 is expressed at high levels in the caudate nucleus and temporal lobe.,

Validation Data



Western blot analysis of lysates from HCT116 cells, primary antibody was diluted at 1:1000, 4°over night

Contact information

Orders: order@immunoway.com
Support: tech@immunoway.com
Telephone: 877-594-3616 (Toll Free), 408-747-0185
Website: http://www.immunoway.com
Address: 2200 Ringwood Ave San Jose, CA 95131 USA



Please scan the QR code
to access additional
product information:
RGS20 Rabbit pAb

For Research Use Only. Not for Use in Diagnostic Procedures.

[Antibody](#) | [ELISA Kits](#) | [Protein](#) | [Reagents](#)