

RAB6B Rabbit pAb

CatalogNo: YN1186

Key Features

Host Species

- Rabbit

Reactivity

- Human, Mouse

Applications

- WB, ELISA

MW

- 22kD (Observed)

Isotype

- IgG

Recommended Dilution Ratios

WB 1:500-2000

ELISA 1:5000-20000

Storage

Storage* -15°C to -25°C/1 year (Do not lower than -25°C)

Formulation Liquid in PBS containing 50% glycerol, 0.5% BSA and 0.02% sodium azide.

Basic Information

Clonality Polyclonal

Immunogen Information

Immunogen Synthesized peptide derived from human protein . at AA range: 80-160

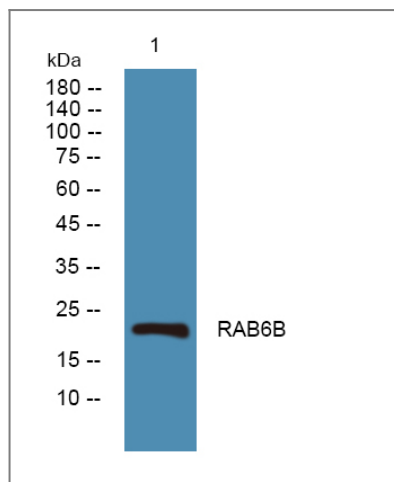
Specificity RAB6B Polyclonal Antibody detects endogenous levels of protein.

Target Information

Gene name RAB6B

Protein Name	Ras-related protein Rab-6B		
	Organism	Gene ID	UniProt ID
	Human	51560 ;	Q9NRW1 ;
	Mouse		P61294 ;
Cellular Localization	Golgi apparatus membrane ; Lipid-anchor . Endoplasmic reticulum-Golgi intermediate compartment . Cytoplasmic vesicle . Colocalizes with BICD1 at vesicular structures that align along microtubules. .		
Tissue specificity	Predominantly expressed in brain.		
Function	Function:Seems to have a role in retrograde membrane traffic at the level of the Golgi complex.,similarity:Belongs to the small GTPase superfamily. Rab family.,subunit:Interacts with RAB6KIFL.,tissue specificity:Predominantly expressed in brain.,		

Validation Data



Western blot analysis of lysates from A431 cells, primary antibody was diluted at 1:1000, 4° over night

Contact information

Orders: order@immunoway.com
 Support: tech@immunoway.com
 Telephone: 877-594-3616 (Toll Free), 408-747-0185
 Website: <http://www.immunoway.com>
 Address: 2200 Ringwood Ave San Jose, CA 95131 USA



Please scan the QR code to access additional product information:
RAB6B Rabbit pAb