

## RAB5B Rabbit pAb

CatalogNo: YN1185

### Key Features

#### Host Species

- Rabbit

#### Reactivity

- Human, Mouse

#### Applications

- WB, ELISA

#### MW

- 23kD (Observed)

#### Isotype

- IgG

### Storage

**Storage\*** -15°C to -25°C/1 year (Do not lower than -25°C)

**Formulation** Liquid in PBS containing 50% glycerol, 0.5% BSA and 0.02% sodium azide.

### Recommended Dilution Ratios

**WB 1:500-2000**

**ELISA 1:5000-20000**

### Basic Information

**Clonality** Polyclonal

### Immunogen Information

**Immunogen** Synthesized peptide derived from human protein . at AA range: 90-170

**Specificity** RAB5B Polyclonal Antibody detects endogenous levels of protein.

### Target Information

**Gene name** RAB5B

**Protein Name** Ras-related protein Rab-5B

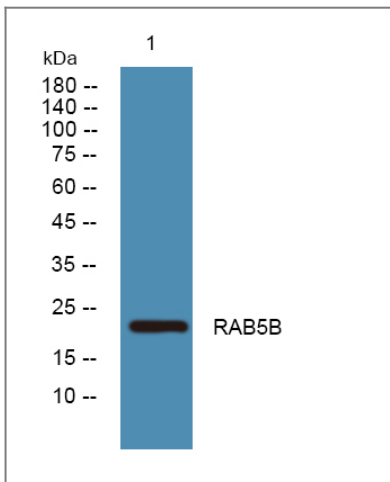
Organism	Gene ID	UniProt ID
Human	<a href="#">5869</a> ;	<a href="#">P61020</a> ;
Mouse		<a href="#">P61021</a> ;

**Cellular Localization** Cell membrane ; Lipid-anchor ; Cytoplasmic side . Early endosome membrane ; Lipid-anchor . Melanosome . Enriched in stage I melanosomes. .

**Tissue specificity** Brain,Endometrium,Eye,PNS,Skin,

**Function** enzyme regulation:Regulated by guanine nucleotide exchange factors (GEFs) which promote the exchange of bound GDP for free GTP.,Function:Protein transport. Probably involved in vesicular traffic.,similarity:Belongs to the small GTPase superfamily. Rab family.,subcellular location:Enriched in stage I melanosomes.,subunit:Binds EEA1. Interacts with RIN2 and RIN3, which probably regulate its pathway, possibly by acting as GEFs.,

## Validation Data



Western blot analysis of lysates from K562 cells, primary antibody was diluted at 1:1000, 4° over night

## Contact information

Orders: [order@immunoway.com](mailto:order@immunoway.com)  
Support: [tech@immunoway.com](mailto:tech@immunoway.com)  
Telephone: 877-594-3616 (Toll Free), 408-747-0185  
Website: <http://www.immunoway.com>  
Address: 2200 Ringwood Ave San Jose, CA 95131 USA



Please scan the QR code to access additional product information:  
**RAB5B Rabbit pAb**