

## RAB32 Rabbit pAb

CatalogNo: YN1176

### Key Features

#### Host Species

- Rabbit

#### Reactivity

- Human, Mouse

#### Applications

- WB, ELISA

#### MW

- 24kD (Observed)

#### Isotype

- IgG

### Recommended Dilution Ratios

**WB 1:500-2000**

**ELISA 1:5000-20000**

### Storage

**Storage\*** -15°C to -25°C/1 year (Do not lower than -25°C)

**Formulation** Liquid in PBS containing 50% glycerol, 0.5% BSA and 0.02% sodium azide.

### Basic Information

**Clonality** Polyclonal

### Immunogen Information

**Immunogen** Synthesized peptide derived from human protein . at AA range: 160-240

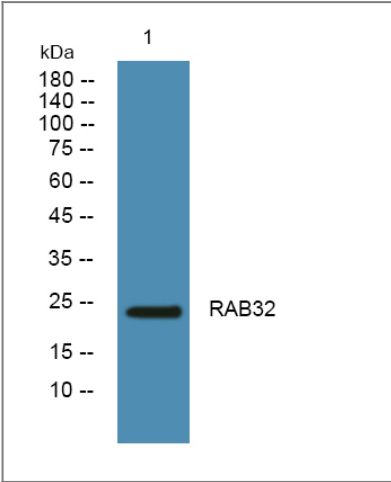
**Specificity** RAB32 Polyclonal Antibody detects endogenous levels of protein.

### Target Information

**Gene name** RAB32

<b>Protein Name</b>	Ras-related protein Rab-32		
	<b>Organism</b>	<b>Gene ID</b>	<b>UniProt ID</b>
	Human	<a href="#">10981</a> ;	<a href="#">Q13637</a> ;
	Mouse		<a href="#">Q9CZE3</a> ;
<b>Cellular Localization</b>	Mitochondrion . Mitochondrion outer membrane ; Lipid-anchor . Cytoplasmic vesicle, phagosome . Cytoplasmic vesicle, phagosome membrane ; Lipid-anchor ; Cytoplasmic side . Melanosome . Melanosome membrane . Recruited to phagosomes containing S.aureus or M.tuberculosis (PubMed:21255211). The BLOC-3 complex, a heterodimer of HPS1 and HPS4 promotes its membrane localization (PubMed:23084991). .		
<b>Tissue specificity</b>	Widely expressed with high levels in heart, liver, kidney, bone marrow, testis, colon and fetal lung.		
<b>Function</b>	Function:Acts as an A-kinase anchoring protein by binding to the type II regulatory subunit of protein kinase A and anchoring it to the mitochondrion. Also involved in synchronization of mitochondrial fission.,similarity:Belongs to the small GTPase superfamily. Rab family.,tissue specificity:Widely expressed with high levels in heart, liver, kidney, bone marrow, testis, colon and fetal lung.,		

Validation Data



Western blot analysis of lysates from SH-SY5Y cells, primary antibody was diluted at 1:1000, 4°over night

Contact information

Orders: order@immunoway.com  
Support: tech@immunoway.com  
Telephone: 877-594-3616 (Toll Free), 408-747-0185  
Website: http://www.immunoway.com  
Address: 2200 Ringwood Ave San Jose, CA 95131 USA



Please scan the QR code to access additional product information:  
**RAB32 Rabbit pAb**

