

## RASF3 Rabbit pAb

CatalogNo: YN1152

### Key Features

#### Host Species

- Rabbit

#### Reactivity

- Human, Mouse

#### Applications

- WB, ELISA

#### MW

- 26kD (Observed)

#### Isotype

- IgG

### Recommended Dilution Ratios

WB 1:500-2000

ELISA 1:5000-20000

### Storage

**Storage\*** -15°C to -25°C/1 year (Do not lower than -25°C)

**Formulation** Liquid in PBS containing 50% glycerol, 0.5% BSA and 0.02% sodium azide.

### Basic Information

**Clonality** Polyclonal

### Immunogen Information

**Immunogen** Synthesized peptide derived from human protein . at AA range: 160-240

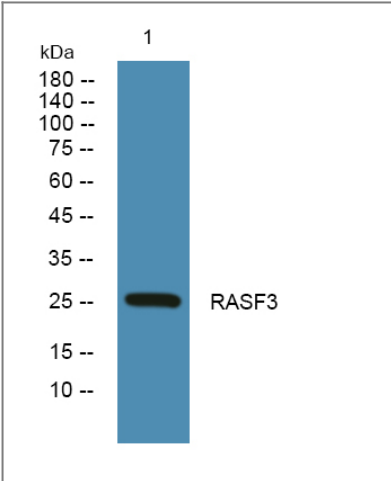
**Specificity** RASF3 Polyclonal Antibody detects endogenous levels of protein.

### Target Information

**Gene name** RASSF3

<b>Protein Name</b>	Ras association domain-containing protein 3		
	<b>Organism</b>	<b>Gene ID</b>	<b>UniProt ID</b>
	Human	<a href="#">283349;</a>	<a href="#">Q86WH2;</a>
	Mouse		<a href="#">Q99P51;</a>
<b>Cellular Localization</b>	Cytoplasm . Cytoplasm, cytoskeleton . Localized to microtubules in vascular endothelial cells.		
<b>Tissue specificity</b>	Widely expressed.		
<b>Function</b>	Caution:Has been termed RASSF5 by Ref.1.,similarity:Contains 1 Ras-associating domain.,similarity:Contains 1 SARAH domain.,subcellular location:Localized to microtubules in vascular endothelial cells.,tissue specificity:Widely expressed.,		

Validation Data



Western blot analysis of lysates from K562 cells, primary antibody was diluted at 1:1000, 4°over night

Contact information

Orders: order@immunoway.com  
Support: tech@immunoway.com  
Telephone: 877-594-3616 (Toll Free), 408-747-0185  
Website: http://www.immunoway.com  
Address: 2200 Ringwood Ave San Jose, CA 95131 USA



Please scan the QR code to access additional product information:  
**RASF3 Rabbit pAb**