

## S1A7A Rabbit pAb

CatalogNo: YN1120

### Key Features

#### Host Species

- Rabbit

#### Reactivity

- Human

#### Applications

- WB,ELISA

#### MW

- 11kD (Observed)

#### Isotype

- IgG

### Recommended Dilution Ratios

**WB 1:500-2000**

**ELISA 1:5000-20000**

### Storage

**Storage\*** -15°C to -25°C/1 year(Do not lower than -25°C)

**Formulation** Liquid in PBS containing 50% glycerol,0.5% BSA and 0.02% sodium azide.

### Basic Information

**Clonality** Polyclonal

### Immunogen Information

**Immunogen** Synthesized peptide derived from human protein . at AA range: 30-110

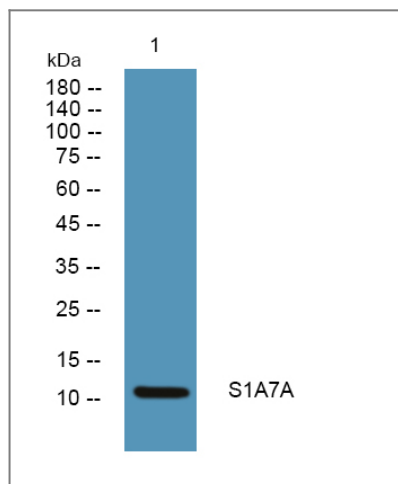
**Specificity** S1A7A Polyclonal Antibody detects endogenous levels of protein.

### Target Information

**Gene name** S100A7A S100A15 S100A7L1

<b>Protein Name</b>	Protein S100-A7A (S100 calcium-binding protein A15) (S100 calcium-binding protein A7-like 1) (S100 calcium-binding protein A7A)		
	<b>Organism</b>	<b>Gene ID</b>	<b>UniProt ID</b>
	Human	<a href="#">338324</a> ;	<a href="#">Q86SG5</a> ;
<b>Cellular Localization</b>	Cytoplasm .		
<b>Tissue specificity</b>	Overexpressed in psoriasis.		
<b>Function</b>	Function:May be involved in epidermal differentiation and inflammation and might therefore be important for the pathogenesis of psoriasis and other diseases.,similarity:Belongs to the S-100 family.,similarity:Contains 2 EF-hand domains.,tissue specificity:Overexpressed in psoriasis.,		

## Validation Data



Western blot analysis of lysates from DU145 cells, primary antibody was diluted at 1:1000, 4°over night

## Contact information

Orders: [order@immunoway.com](mailto:order@immunoway.com)  
 Support: [tech@immunoway.com](mailto:tech@immunoway.com)  
 Telephone: 877-594-3616 (Toll Free), 408-747-0185  
 Website: <http://www.immunoway.com>  
 Address: 2200 Ringwood Ave San Jose, CA 95131 USA



Please scan the QR code  
 to access additional  
 product information:  
**S1A7A Rabbit pAb**