

## BD1L1 Rabbit pAb

CatalogNo: YN1108

### Key Features

#### Host Species

- Rabbit

#### Reactivity

- Human

#### Applications

- IHC,IF

#### MW

- 335kD (Observed)

#### Isotype

- IgG

### Recommended Dilution Ratios

IHC 1:50-300

IF 1:50-200

### Storage

**Storage\*** -15°C to -25°C/1 year(Do not lower than -25°C)

**Formulation** Liquid in PBS containing 50% glycerol,0.5% BSA and 0.02% sodium azide.

### Basic Information

**Clonality** Polyclonal

### Immunogen Information

**Immunogen** Synthesized peptide derived from human protein . at AA range: 1280-1360

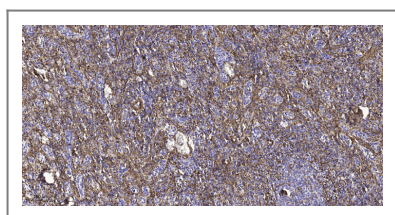
**Specificity** BD1L1 Polyclonal Antibody detects endogenous levels of protein.

### Target Information

**Gene name** BOD1L1 BOD1L FAM44A KIAA1327

<b>Protein Name</b>	Biorientation of chromosomes in cell division protein 1-like 1 (Protein FAM44A)		
	<b>Organism</b>	<b>Gene ID</b>	<b>UniProt ID</b>
	Human	<a href="#">259282;</a>	<a href="#">Q8NFC6;</a>
<b>Cellular Localization</b>	Chromosome . Localizes at replication forks: following DNA damage, localizes to damaged replication forks undergoing resection. .		

## Validation Data



Immunohistochemical analysis of paraffin-embedded human spleen tissue. 1,primary Antibody was diluted at 1:200(4° overnight). 2, Sodium citrate pH 6.0 was used for antigen retrieval(>98°C,20min). 3,Secondary antibody was diluted at 1:200

## Contact information

Orders: [order@immunoway.com](mailto:order@immunoway.com)  
 Support: [tech@immunoway.com](mailto:tech@immunoway.com)  
 Telephone: 877-594-3616 (Toll Free), 408-747-0185  
 Website: <http://www.immunoway.com>  
 Address: 2200 Ringwood Ave San Jose, CA 95131 USA



Please scan the QR code to access additional product information:  
**BD1L1 Rabbit pAb**

For Research Use Only. Not for Use in Diagnostic Procedures.

[Antibody](#) | [ELISA Kits](#) | [Protein](#) | [Reagents](#)