

## PNKD Rabbit pAb

CatalogNo: YN1104

### Key Features

**Host Species**

- Rabbit

**Reactivity**

- Human, Mouse

**Applications**

- WB, ELISA

**MW**

- 42kD (Observed)

**Isotype**

- IgG

### Storage

**Storage\*** -15°C to -25°C/1 year (Do not lower than -25°C)**Formulation** Liquid in PBS containing 50% glycerol, 0.5% BSA and 0.02% sodium azide.

### Recommended Dilution Ratios

**WB 1:500-2000****ELISA 1:5000-20000**

### Basic Information

**Clonality** Polyclonal

### Immunogen Information

**Immunogen** Synthesized peptide derived from human protein . at AA range: 140-220**Specificity** PNKD Polyclonal Antibody detects endogenous levels of protein.

### Target Information

**Gene name** PNKD KIAA1184 MR1 TAHCCP2 FKSG19 UNQ2491/PRO5778

**Protein Name** Probable hydrolase PNKD (Myofibrillogenesis regulator 1) (MR-1) (Paroxysmal nonkinesigenic dyskinesia protein) (Trans-activated by hepatitis C virus core protein 2)

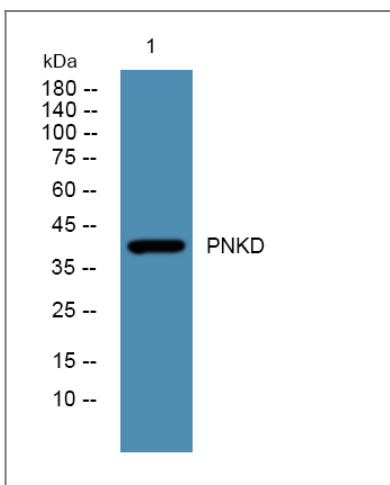
Organism	Gene ID	UniProt ID
Human	<a href="#">25953</a> ;	<a href="#">Q8N490</a> ;
Mouse		<a href="#">Q69ZP3</a> ;

**Cellular Localization** [Isoform 1]: Membrane; Peripheral membrane protein.; [Isoform 2]: Cytoplasm. Nucleus.; [Isoform 3]: Mitochondrion.

**Tissue specificity** Isoform 1 is only expressed in the brain. Isoform 2 is ubiquitously detected with highest expression in skeletal muscle and detected in myocardial myofibrils. Variant Val-7 and Val-9 are detected in the brain only.

**Function** Disease:Defects in PNKD are the cause of dystonia type 8 (DYT8) [MIM:118800]. DYT8 is a paroxysmal non-kinesigenic dystonia/dyskinesia. Dystonia is defined by the presence of sustained involuntary muscle contractions, often leading to abnormal postures. DYT8 is characterized by attacks of involuntary movements brought on by stress, alcohol, fatigue or caffeine. The attacks generally last between a few seconds and four hours or longer. The attacks may begin in one limb and spread throughout the body, including the face.,Function:Probable hydrolase that plays an aggravative role in the development of cardiac hypertrophy via activation of the NF-kappa-B signaling pathway.,induction:By Hepatitis C virus core protein.,PTM:Isoform 2 is phosphorylated at Ser-121 upon DNA damage, probably by ATM or ATR.,similarity:Belongs to the metallo-beta-lactamase superfamily. Glyoxalase II family.,subunit:Isoform 2 interacts with the sarcomeric proteins, MRLC2, MYOM1 and ENO3.,tissue specificity:Isoform 1 is only expressed in the brain. Isoform 2 is ubiquitously detected with highest expression in skeletal muscle and detected in myocardial myofibrils. Variant Val-7 and Val-9 are detected in the brain.,

## Validation Data



Western blot analysis of lysates from SW480 cells, primary antibody was diluted at 1:1000, 4° over night

## Contact information

Orders: order@immunoway.com  
Support: tech@immunoway.com  
Telephone: 877-594-3616 (Toll Free), 408-747-0185  
Website: http://www.immunoway.com  
Address: 2200 Ringwood Ave San Jose, CA 95131 USA



Please scan the QR code  
to access additional  
product information:  
**PNKD Rabbit pAb**

---

For Research Use Only. Not for Use in Diagnostic Procedures.

[Antibody](#) | [ELISA Kits](#) | [Protein](#) | [Reagents](#)