

## CLP1 Rabbit pAb

CatalogNo: YN1096

### Key Features

#### Host Species

- Rabbit

#### Reactivity

- Human, Mouse, Rat

#### Applications

- WB, ELISA

#### MW

- 46kD (Observed)

#### Isotype

- IgG

### Recommended Dilution Ratios

WB 1:500-2000

ELISA 1:5000-20000

### Storage

**Storage\*** -15°C to -25°C/1 year (Do not lower than -25°C)

**Formulation** Liquid in PBS containing 50% glycerol, 0.5% BSA and 0.02% sodium azide.

### Basic Information

**Clonality** Polyclonal

### Immunogen Information

**Immunogen** Synthesized peptide derived from human protein . at AA range: 50-130

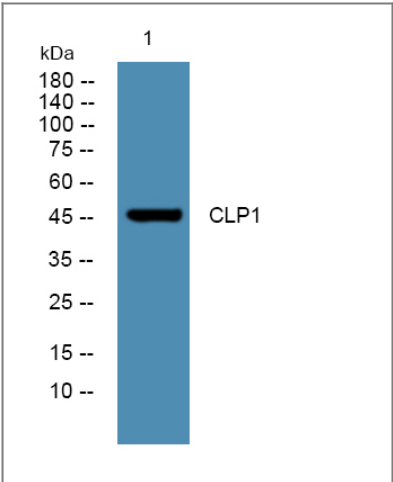
**Specificity** CLP1 Polyclonal Antibody detects endogenous levels of protein.

### Target Information

**Gene name** CLP1 HEAB

<b>Protein Name</b>	Polyribonucleotide 5'-hydroxyl-kinase Clp1 (Polynucleotide kinase Clp1) (Pre-mRNA cleavage complex II protein Clp1)		
	<b>Organism</b>	<b>Gene ID</b>	<b>UniProt ID</b>
	Human	<a href="#">10978;</a>	<a href="#">Q92989;</a>
	Mouse		<a href="#">Q99LI9;</a>
	Rat		<a href="#">Q5PQL4;</a>
<b>Cellular Localization</b>	Nucleus .		
<b>Tissue specificity</b>	Lung,Placenta,		
<b>Function</b>	<p>Catalytic activity:ATP + 5'-dephospho-DNA = ADP + 5'-phospho-DNA.,Catalytic activity:ATP + 5'-dephospho-RNA = ADP + 5'-phospho-RNA.,cofactor:Magnesium, manganese or nickel.,Function:Polynucleotide kinase that can phosphorylate the 5'-hydroxyl groups of double-stranded RNA (dsRNA), single-stranded RNA (ssRNA), double stranded DNA (dsDNA) and double-stranded DNA:RNA hybrids. dsRNA is phosphorylated more efficiently than dsDNA, and the RNA component of a DNA:RNA hybrid is phosphorylated more efficiently than the DNA component. Appears to have roles in both tRNA splicing and mRNA 3'-end formation. Component of the tRNA splicing endonuclease complex. Phosphorylates the 5'-terminus of the tRNA 3'-exon during tRNA splicing; this phosphorylation event is a prerequisite for the subsequent ligation of the two exon halves and the production of a mature tRNA. Component of the pre-mRNA cleavage complex II (CF-II), which seems to be required for mRNA 3'-end formation. Also phosphorylates the 5'-terminus of exogenously introduced short interfering RNAs (siRNAs), which is a necessary prerequisite for their incorporation into the RNA-induced silencing complex (RISC). However endogenous siRNAs and microRNAs (miRNAs) that are produced by the cleavage of dsRNA precursors by dicer1 already contain a 5'-phosphate group, so this protein may be dispensible for normal RNA-mediated gene silencing.,similarity:Belongs to the Clp1 family.,subunit:Component of the tRNA splicing endonuclease complex, composed of CLP1, TSEN2, TSEN15, TSEN34 and TSEN54. Component of pre-mRNA cleavage complex II (CF-II). Also associates with numerous components of the pre-mRNA cleavage complex I (CF-I/CFIm), including NUDT21, CPSF2, CPSF3, CPSF6 and CPSF7. Interacts with CSTF2 and SYMPK.,</p>		

| Validation Data



Western blot analysis of lysates from U2OS cells, primary antibody was diluted at 1:1000, 4°over night

## | Contact information

Orders: order@immunoway.com  
Support: tech@immunoway.com  
Telephone: 877-594-3616 (Toll Free), 408-747-0185  
Website: <http://www.immunoway.com>  
Address: 2200 Ringwood Ave San Jose, CA 95131 USA



Please scan the QR code  
to access additional  
product information:  
**CLP1 Rabbit pAb**

---

For Research Use Only. Not for Use in Diagnostic Procedures.

[Antibody](#) | [ELISA Kits](#) | [Protein](#) | [Reagents](#)