

P2RX1 Rabbit pAb

CatalogNo: YN1021

| Key Features

Host Species

- Rabbit

Reactivity

- Human, Mouse, Rat

Applications

- WB, ELISA

MW

- 43kD (Observed)

Isotype

- IgG

| Recommended Dilution Ratios

WB 1:500-2000

ELISA 1:5000-20000

| Storage

Storage* -15°C to -25°C/1 year (Do not lower than -25°C)

Formulation Liquid in PBS containing 50% glycerol, 0.5% BSA and 0.02% sodium azide.

| Basic Information

Clonality Polyclonal

| Immunogen Information

Immunogen Synthesized peptide derived from human protein . at AA range: 150-230

Specificity P2RX1 Polyclonal Antibody detects endogenous levels of protein.

| Target Information

Gene name P2RX1 P2X1

Protein Name P2X purinoceptor 1 (P2X1) (ATP receptor) (Purinergic receptor)

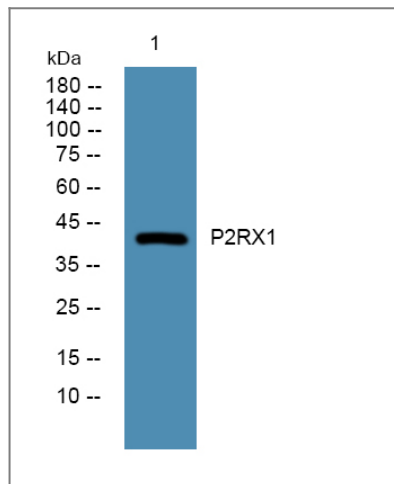
Organism	Gene ID	UniProt ID
Human	5023;	P51575;
Mouse		P51576;
Rat		P47824;

Cellular Localization Membrane; Multi-pass membrane protein.

Tissue specificity Blood,Lung,Placenta,Platelet,Urinary bladder,Urinary bladder smooth muscle,

Function Disease:Defects in P2RX1 are a cause of bleeding disorder [MIM:600845].,Function:Ligand gated ion channel with relatively high calcium permeability. Binding to ATP mediates synaptic transmission between neurons and from neurons to smooth muscle. Seems to be linked to apoptosis, by increasing the intracellular concentration of calcium in the presence of ATP, leading to programmed cell death.,online information:P2RX1 entry,online information:P2X receptor entry,similarity:Belongs to the P2X receptor family.,subunit:Homo- or heteropolymers.,

Validation Data



Western blot analysis of lysates from SW480 cells, primary antibody was diluted at 1:1000, 4° over night

Contact information

Orders: order@immunoway.com
Support: tech@immunoway.com
Telephone: 877-594-3616 (Toll Free), 408-747-0185
Website: <http://www.immunoway.com>
Address: 2200 Ringwood Ave San Jose, CA 95131 USA



Please scan the QR code to access additional product information:
P2RX1 Rabbit pAb

