

NIPBL Rabbit pAb

CatalogNo: YN0982

Key Features

Host Species

- Rabbit

Reactivity

- Human, Mouse

Applications

- IHC, IF

MW

- 308kD (Observed)

Isotype

- IgG

Storage

Storage* -15°C to -25°C/1 year (Do not lower than -25°C)

Formulation Liquid in PBS containing 50% glycerol, 0.5% BSA and 0.02% sodium azide.

Recommended Dilution Ratios

IHC 1:50-300

IF 1:50-200

Basic Information

Clonality Polyclonal

Immunogen Information

Immunogen Synthesized peptide derived from human protein . at AA range: 560-640

Specificity NIPBL Polyclonal Antibody detects endogenous levels of protein.

Target Information

Gene name NIPBL IDN3

Protein Name Nipped-B-like protein (Delangin) (SCC2 homolog)

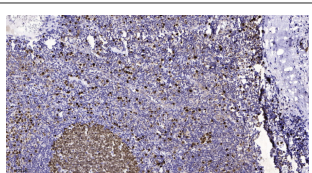
Organism	Gene ID	UniProt ID
Human	25836 ;	Q6KC79 ;
Mouse		Q6KCD5 ;

Cellular Localization Nucleus . Chromosome .

Tissue specificity Widely expressed. Highly expressed in heart, skeletal muscle, fetal and adult liver, fetal and adult kidney. Expressed at intermediates level in thymus, placenta, peripheral leukocyte and small intestine. Weakly or not expressed in brain, colon, spleen and lung.

Function developmental stage:In embryos, it is expressed in developing limbs and later in cartilage primordia of the ulna and of various hand bones. Sites of craniofacial expression include the cartilage primordium of the basioccipital and basisphenoid skull bones and elsewhere in the head and face, including a region encompassing the mesenchyme adjacent to the cochlear canal. Also expressed in the spinal column, notochord and surface ectoderm sclerotome and what seem to be migrating myoblasts. Expressed in the developing heart in the atrial and ventricular myocardium and in the ventricular tuberculae but absent in the endocardial cushions. Also expressed in the developing esophagus, trachea and midgut loops, in the bronchi of the lung and in the tubules of the metanephros. Expression in organs and tissues not typically affected in CDL (e.g., the developing trachea, bronchi, esophagus, heart and kidney) may reflect a bias towards underreporting of more subtle aspects of the phenotype or problems that typically present later in life. Expressed in the mesenchyme surrounding the cochlear canal possibly reflecting the hearing impairment commonly found. Weakly or not expressed in embryonic brain.,Disease:Defects in NIPBL are the cause of Cornelia de Lange syndrome type 1 (CDLS1) [MIM:122470]. CDLS is a clinically heterogeneous developmental disorder associated with malformations affecting multiple systems. CDLS is characterized by facial dysmorphisms, abnormal hands and feet, growth delay, cognitive retardation and various other malformations including gastroesophageal dysfunction and cardiac, ophthalmologic and genitourinary anomalies.,Domain:Contains one Pro-Xaa-Val-Xaa-Leu (PxVxL) motif, which is required for interaction with chromoshadow domains. This motif requires additional residues -7, -6, +4 and +5 of the central Val which contact the chromoshadow domain.,Function:Probably plays a structural role in chromatin. Involved in sister chromatid cohesion, possibly by interacting with the cohesin complex.,miscellaneous:The sequence shown here is derived from an EMBL/GenBank/DDBJ third party annotation (TPA) entry.,PTM:Phosphorylated upon DNA damage, probably by ATM or ATR.,sequence Caution:Chimeric cDNA.,similarity:Belongs to the SCC2/Nipped-B family.,similarity:Contains 5 HEAT repeats.,subunit:Interacts directly with CBX5 via the PxVxL motif.,tissue specificity:Widely expressed. Highly expressed in heart, skeletal muscle, fetal and adult liver, fetal and adult kidney. Expressed at intermediated level in thymus, placenta, peripheral leukocyte and small intestine. Weakly or not expressed in brain, colon, spleen and lung.,

Validation Data



Immunohistochemical analysis of paraffin-embedded human tonsil. 1, Antibody was diluted at 1:200(4° overnight). 2, Tris-EDTA,pH9.0 was used for antigen retrieval. 3,Secondary antibody was diluted at 1:200(room temperature, 45min).

| Contact information

Orders: order@immunoway.com
Support: tech@immunoway.com
Telephone: 877-594-3616 (Toll Free), 408-747-0185
Website: <http://www.immunoway.com>
Address: 2200 Ringwood Ave San Jose, CA 95131 USA



Please scan the QR code
to access additional
product information:
NIPBL Rabbit pAb

For Research Use Only. Not for Use in Diagnostic Procedures.

[Antibody](#) | [ELISA Kits](#) | [Protein](#) | [Reagents](#)