

## NGN1 Rabbit pAb

CatalogNo: YN0962

### | Key Features

#### Host Species

- Rabbit

#### Reactivity

- Human,Rat,Mouse,

#### Applications

- WB,ELISA

#### MW

- 26kD (Observed)

#### Isotype

- IgG

### | Recommended Dilution Ratios

**WB 1:500-2000**

**ELISA 1:5000-20000**

### | Storage

**Storage\*** -15°C to -25°C/1 year(Do not lower than -25°C)

**Formulation** Liquid in PBS containing 50% glycerol,0.5% BSA and 0.02% sodium azide.

### | Basic Information

**Clonality** Polyclonal

### | Immunogen Information

**Immunogen** Synthesized peptide derived from human protein . at AA range: 160-240

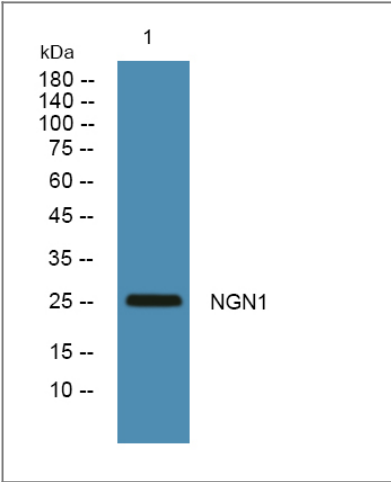
**Specificity** NGN1 Polyclonal Antibody detects endogenous levels of protein.

### | Target Information

**Gene name** NEUROG1 BHLHA6 NEUROD3 NGN NGN1

<b>Protein Name</b>	Neurogenin-1 (NGN-1) (Class A basic helix-loop-helix protein 6) (bHLHa6) (Neurogenic basic-helix-loop-helix protein) (Neurogenic differentiation factor 3) (NeuroD3)		
	<b>Organism</b>	<b>Gene ID</b>	<b>UniProt ID</b>
	Human	<a href="#">4762;</a>	<a href="#">Q92886;</a>
	Mouse		<a href="#">P70660;</a>
	Rat		<a href="#">P70595;</a>
<b>Cellular Localization</b>	Nucleus .		
<b>Tissue specificity</b>	Expression restricted to the embryonic nervous system.		
<b>Function</b>	Function:Appears to mediate neuronal differentiation.,similarity:Contains 1 basic helix-loop-helix (bHLH) domain.,subunit:Efficient DNA binding requires dimerization with another bHLH protein.,tissue specificity:Expression restricted to the embryonic nervous system.,		

| Validation Data



Western blot analysis of lysates from KB cells, primary antibody was diluted at 1:1000, 4°over night

| Contact information

Orders: order@immunoway.com  
Support: tech@immunoway.com  
Telephone: 877-594-3616 (Toll Free), 408-747-0185  
Website: http://www.immunoway.com  
Address: 2200 Ringwood Ave San Jose, CA 95131 USA



Please scan the QR code to access additional product information:  
**NGN1 Rabbit pAb**

