

## MYO5C Rabbit pAb

CatalogNo: YN0908

### Key Features

#### Host Species

- Rabbit

#### Reactivity

- Human

#### Applications

- WB,ELISA

#### MW

- 191kD (Observed)

#### Isotype

- IgG

### Recommended Dilution Ratios

WB 1:500-2000

ELISA 1:5000-20000

### Storage

**Storage\*** -15°C to -25°C/1 year(Do not lower than -25°C)

**Formulation** Liquid in PBS containing 50% glycerol,0.5% BSA and 0.02% sodium azide.

### Basic Information

**Clonality** Polyclonal

### Immunogen Information

**Immunogen** Synthesized peptide derived from human protein . at AA range: 850-930

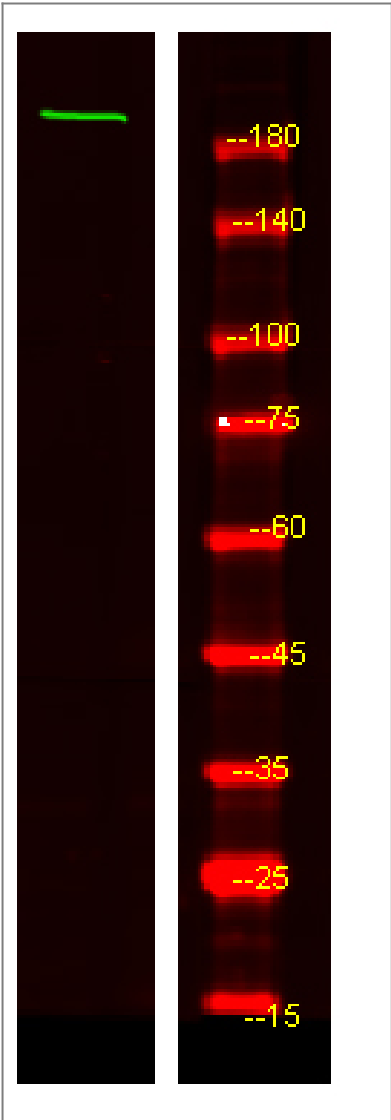
**Specificity** MYO5C Polyclonal Antibody detects endogenous levels of protein.

### Target Information

**Gene name** MYO5C

Protein Name	Unconventional myosin-Vc		
	Organism	Gene ID	UniProt ID
	Human	<a href="#">55930</a> ;	<a href="#">Q9NQX4</a> ;
Cellular Localization	myosin complex,extracellular exosome,		
Tissue specificity	Expressed chiefly in non-neuronal tissues. Particularly abundant in epithelial and glandular tissues including pancreas, prostate, mammary, stomach, colon and lung.		
Function	Function:May be involved in transferrin trafficking. Likely to power actin-based membrane trafficking in many physiologically crucial tissues.,similarity:Contains 1 dilute domain.,similarity:Contains 1 myosin head-like domain.,similarity:Contains 6 IQ domains.,tissue specificity:Expressed chiefly in non-neuronal tissues. Particularly abundant in epithelial and glandular tissues including pancreas, prostate, mammary, stomach, colon and lung.,		

| Validation Data



Western Blot analysis of HEK293 lysis, using primary antibody at 1:1000 dilution. Secondary antibody(catalog#:RS23920) was diluted at 1:10000

## | Contact information

Orders: order@immunoway.com  
Support: tech@immunoway.com  
Telephone: 877-594-3616 (Toll Free), 408-747-0185  
Website: <http://www.immunoway.com>  
Address: 2200 Ringwood Ave San Jose, CA 95131 USA



Please scan the QR code  
to access additional  
product information:  
**MYO5C Rabbit pAb**

---

For Research Use Only. Not for Use in Diagnostic Procedures.

[Antibody](#) | [ELISA Kits](#) | [Protein](#) | [Reagents](#)