

## MDFIC Rabbit pAb

CatalogNo: YN0896

### Key Features

#### Host Species

- Rabbit

#### Reactivity

- Human, Mouse

#### Applications

- WB, ELISA

#### MW

- 27kD (Observed)

#### Isotype

- IgG

### Recommended Dilution Ratios

**WB 1:500-2000**

**ELISA 1:5000-20000**

### Storage

**Storage\*** -15°C to -25°C/1 year (Do not lower than -25°C)

**Formulation** Liquid in PBS containing 50% glycerol, and 0.02% sodium azide.

### Basic Information

**Clonality** Polyclonal

### Immunogen Information

**Immunogen** Synthesized peptide derived from human protein . at AA range: 100-180

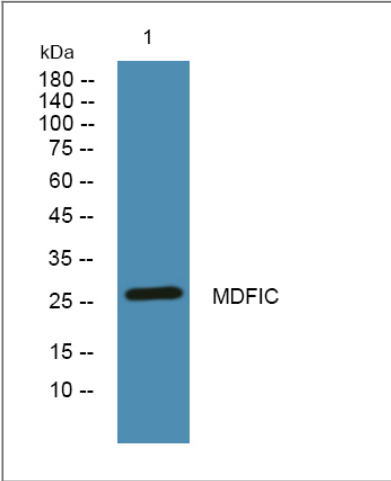
**Specificity** MDFIC Polyclonal Antibody detects endogenous levels of protein.

### Target Information

**Gene name** MDFIC

<b>Protein Name</b>	MyoD family inhibitor domain-containing protein (I-mfa domain-containing protein) (hIC)		
	<b>Organism</b>	<b>Gene ID</b>	<b>UniProt ID</b>
	Human	<a href="#">29969;</a>	<a href="#">Q9P1T7;</a>
	Mouse		<a href="#">Q8BX65;</a>
<b>Cellular Localization</b>	[Isoform 1]: Nucleus, nucleolus. Also shows a granular distribution in the cytoplasm.; [Isoform 2]: Cytoplasm . Weak expression in the nucleus.		
<b>Tissue specificity</b>	Expressed in lymphoid organs (spleen, thymus, peripheral blood leukocytes) as well as prostate, uterus and small intestine.		
<b>Function</b>	Domain:The cysteine-rich C-terminus is involved in its granular distribution in the cytoplasm.,Function:Modulates the expression from both cellular and viral promoters. Down-regulates Tat-dependent transcription of the human immunodeficiency virus type 1 (HIV-1) LTR by interacting with HIV-1 Tat and Rev and impairing their nuclear import, probably by rendering the NLS domains inaccessible to importin-beta. Also stimulates activation of human T-cell leukemia virus type I (HTLV-I) LTR. Binds to the axin complex, resulting in an increase in the level of free beta-catenin. Affects axin regulation of the WNT and JNK signaling pathways.,similarity:Belongs to the MDFI family.,subcellular location:Isoform 1 localizes to the nucleolus and also shows a granular distribution in the cytoplasm. Isoform 2 is predominantly distributed throughout the cytoplasm, with only weak expression in the nucleus.,subunit:The C-terminus interacts with HIV-1 Tat and Rev, AXIN1, the histidine-rich region of CCNT1/CYCLIN T and weakly with LEF1.,tissue specificity:Expressed in lymphoid organs (spleen, thymus, peripheral blood leukocytes) as well as prostate, uterus and small intestine.,		

| Validation Data



Western blot analysis of lysates from DU145 cells, primary antibody was diluted at 1:1000, 4°over night

| Contact information

Orders: order@immunoway.com  
Support: tech@immunoway.com  
Telephone: 877-594-3616 (Toll Free), 408-747-0185  
Website: http://www.immunoway.com  
Address: 2200 Ringwood Ave San Jose, CA 95131 USA



Please scan the QR code  
to access additional  
product information:  
**MDFIC Rabbit pAb**

---

For Research Use Only. Not for Use in Diagnostic Procedures.

[Antibody](#) | [ELISA Kits](#) | [Protein](#) | [Reagents](#)