

RT10 Rabbit pAb

CatalogNo: YN0858

Key Features

Host Species

- Rabbit

Reactivity

- Human,Rat,Mouse

Applications

- WB,ELISA

MW

- 22kD (Observed)

Isotype

- IgG

Recommended Dilution Ratios

WB 1:500-2000

ELISA 1:5000-20000

Storage

Storage* -15°C to -25°C/1 year(Do not lower than -25°C)

Formulation Liquid in PBS containing 50% glycerol, and 0.02% sodium azide.

Basic Information

Clonality Polyclonal

Immunogen Information

Immunogen Synthesized peptide derived from human protein . at AA range: 120-200

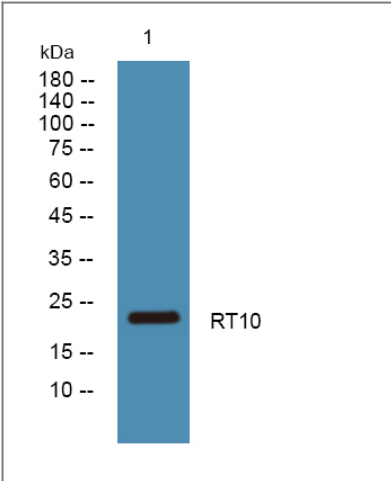
Specificity RT10 Polyclonal Antibody detects endogenous levels of protein.

Target Information

Gene name MRPS10 MSTP040

Protein Name	28S ribosomal protein S10, mitochondrial (MRP-S10) (S10mt)		
	Organism	Gene ID	UniProt ID
	Human	55173;	P82664;
	Mouse		Q80ZK0;
	Rat		Q7TQ82;
Cellular Localization	Mitochondrion .		
Tissue specificity	Brain,Heart,		
Function	similarity:Belongs to the ribosomal protein S10P family.,		

Validation Data



Western blot analysis of lysates from A431 cells, primary antibody was diluted at 1:1000, 4°over night

Contact information

Orders: order@immunoway.com
 Support: tech@immunoway.com
 Telephone: 877-594-3616 (Toll Free), 408-747-0185
 Website: <http://www.immunoway.com>
 Address: 2200 Ringwood Ave San Jose, CA 95131 USA



Please scan the QR code
 to access additional
 product information:
RT10 Rabbit pAb