

MAP1B Rabbit pAb

CatalogNo: YN0856

Key Features

Host Species

- Rabbit

Reactivity

- Human,Rat,Mouse

Applications

- IHC,IF

MW

- 271kD (Observed)

Isotype

- IgG

Recommended Dilution Ratios

IHC 1:50-300

IF 1:50-200

Storage

Storage* -15°C to -25°C/1 year(Do not lower than -25°C)

Formulation Liquid in PBS containing 50% glycerol,0.5% BSA and 0.02% sodium azide.

Basic Information

Clonality Polyclonal

Immunogen Information

Immunogen Synthesized peptide derived from human protein . at AA range: 480-560

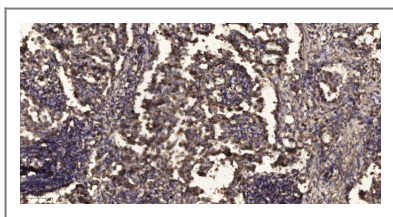
Specificity MAP1B Polyclonal Antibody detects endogenous levels of protein.

Target Information

Gene name MAP1B

Protein Name	Microtubule-associated protein 1B (MAP-1B) [Cleaved into: MAP1B heavy chain; MAP1 light chain LC1]		
	Organism	Gene ID	UniProt ID
	Human	4131 ;	P46821 ;
	Mouse		P14873 ;
	Rat		P15205 ;
Cellular Localization	Cytoplasm, cytoskeleton . Cytoplasm . Cell junction, synapse . Cell projection, dendritic spine . Colocalizes with DAPK1 in the microtubules and cortical actin fibers. . ; [MAP1 light chain LC1]: Cytoplasm .		
Tissue specificity	Amygdala,Brain,Cajal-Retzius cell,Epithelium,Eye,Fetal brain,Fetal		
Function	Domain:Has a highly basic region with many copies of the sequence KKEE and KKEI/V, repeated but not at fixed intervals, which is responsible for the binding of MAP1B to microtubules.,Function:The function of brain MAPS is essentially unknown. Phosphorylated MAP1B may play a role in the cytoskeletal changes that accompany neurite extension. Possibly MAP1B Binds to at least two tubulin subunits in the polymer, and this bridging of subunits might be involved in nucleating microtubule polymerization and in stabilizing microtubules.,PTM:LC1 is generated from MAP1B by proteolytic processing.,PTM:Phosphorylated upon DNA damage, probably by ATM or ATR.,similarity:Belongs to the MAP1 family.,subunit:3 different light chains, LC1, LC2 and LC3, can associate with MAP1A and MAP1B proteins. LC1 interacts with the amino-terminal region of MAP1B. Interacts with ANP32A and TIAM2 (By similarity). Interacts (via C-terminus) with GAN (via Kelch domains).,		

Validation Data



Immunohistochemical analysis of paraffin-embedded human Squamous cell carcinoma of lung. 1, Antibody was diluted at 1:200(4° overnight). 2, Tris-EDTA,pH9.0 was used for antigen retrieval. 3,Secondary antibody was diluted at 1:200(room temperature, 45min).

Contact information

Orders: order@immunoway.com
 Support: tech@immunoway.com
 Telephone: 877-594-3616 (Toll Free), 408-747-0185
 Website: <http://www.immunoway.com>
 Address: 2200 Ringwood Ave San Jose, CA 95131 USA



Please scan the QR code to access additional product information:
MAP1B Rabbit pAb

