

KI2S5 Rabbit pAb

CatalogNo: YN0814

| Key Features

Host Species

- Rabbit

Reactivity

- Human

Applications

- WB,ELISA

MW

- 33kD (Observed)

Isotype

- IgG

| Recommended Dilution Ratios

WB 1:500-2000

ELISA 1:5000-20000

| Storage

Storage* -15°C to -25°C/1 year(Do not lower than -25°C)

Formulation Liquid in PBS containing 50% glycerol,0.5% BSA and 0.02% sodium azide.

| Basic Information

Clonality Polyclonal

| Immunogen Information

Immunogen Synthesized peptide derived from part region of human protein

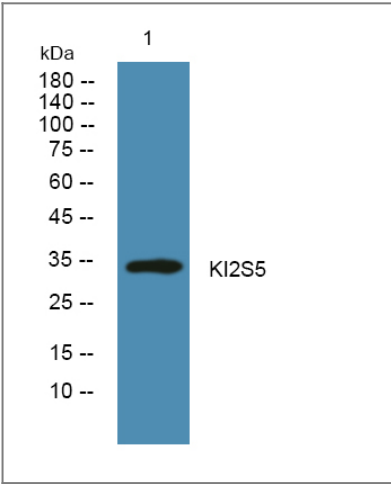
Specificity KI2S5 Polyclonal Antibody detects endogenous levels of protein.

| Target Information

Gene name KIR2DS5 CD158G NKAT9

Protein Name	Killer cell immunoglobulin-like receptor 2DS5 (CD158 antigen-like family member G) (MHC class I NK cell receptor) (Natural killer-associated transcript 9) (NKAT-9) (CD antigen CD158g)		
	Organism	Gene ID	UniProt ID
	Human		Q14953 ;
Cellular Localization	Cell membrane ; Single-pass type I membrane protein ; Extracellular side .		
Tissue specificity	Expressed on a discrete subset of peripheral blood NK cells.		
Function	Function:Receptor on natural killer (NK) cells for HLA-C alleles. Does not inhibit the activity of NK cells.,similarity:Belongs to the immunoglobulin superfamily.,similarity:Contains 2 Ig-like C2-type (immunoglobulin-like) domains.,		

| Validation Data



Western blot analysis of lysates from Jurkat cells, primary antibody was diluted at 1:1000, 4°over night

| Contact information

Orders: order@immunoway.com
Support: tech@immunoway.com
Telephone: 877-594-3616 (Toll Free), 408-747-0185
Website: http://www.immunoway.com
Address: 2200 Ringwood Ave San Jose, CA 95131 USA



Please scan the QR code to access additional product information:
KI2S5 Rabbit pAb