

## TF2LY Rabbit pAb

CatalogNo: YN0798

### | Key Features

#### Host Species

- Rabbit

#### Reactivity

- Human

#### Applications

- WB,ELISA

#### MW

- 20kD (Observed)

#### Isotype

- IgG

### | Recommended Dilution Ratios

**WB 1:500-2000**

**ELISA 1:5000-20000**

### | Storage

**Storage\*** -15°C to -25°C/1 year(Do not lower than -25°C)

**Formulation** Liquid in PBS containing 50% glycerol,0.5% BSA and 0.02% sodium azide.

### | Basic Information

**Clonality** Polyclonal

### | Immunogen Information

**Immunogen** Synthesized peptide derived from part region of human protein

**Specificity** TF2LY Polyclonal Antibody detects endogenous levels of protein.

### | Target Information

**Gene name** TGIF2LY TGIFLY

**Protein Name** Homeobox protein TGIF2LY (TGF-beta-induced transcription factor 2-like protein) (TGFB-induced factor 2-like protein, Y-linked) (TGIF-like on the Y)

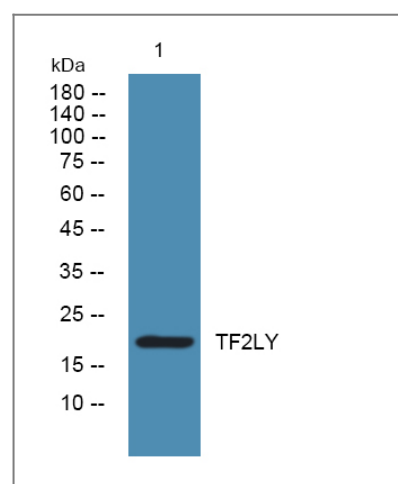
Organism	Gene ID	UniProt ID
Human	<a href="#">90655</a> ;	<a href="#">Q8IUE0</a> ;

**Cellular Localization** Nucleus .

**Tissue specificity** Specifically expressed in adult testis.

**Function** Function:May have a transcription role in testis. May act as a competitor/regulator of TGIF2LX.,similarity:Belongs to the TALE/TGIF homeobox family.,similarity:Contains 1 homeobox DNA-binding domain.,tissue specificity:Specifically expressed in adult testis.,

## Validation Data



Western blot analysis of lysates from A431 cells, primary antibody was diluted at 1:1000, 4° over night

## Contact information

Orders: [order@immunoway.com](mailto:order@immunoway.com)  
Support: [tech@immunoway.com](mailto:tech@immunoway.com)  
Telephone: 877-594-3616 (Toll Free), 408-747-0185  
Website: <http://www.immunoway.com>  
Address: 2200 Ringwood Ave San Jose, CA 95131 USA



Please scan the QR code to access additional product information:  
**TF2LY Rabbit pAb**