

## HXB3 Rabbit pAb

CatalogNo: YN0778

### | Key Features

#### Host Species

- Rabbit

#### Reactivity

- Human, Mouse

#### Applications

- WB, ELISA

#### MW

- 47kD (Observed)

#### Isotype

- IgG

### | Recommended Dilution Ratios

**WB 1:500-2000**

**ELISA 1:5000-20000**

### | Storage

**Storage\*** -15°C to -25°C/1 year (Do not lower than -25°C)

**Formulation** Liquid in PBS containing 50% glycerol, 0.5% BSA and 0.02% sodium azide.

### | Basic Information

**Clonality** Polyclonal

### | Immunogen Information

**Immunogen** Synthesized peptide derived from part region of human protein

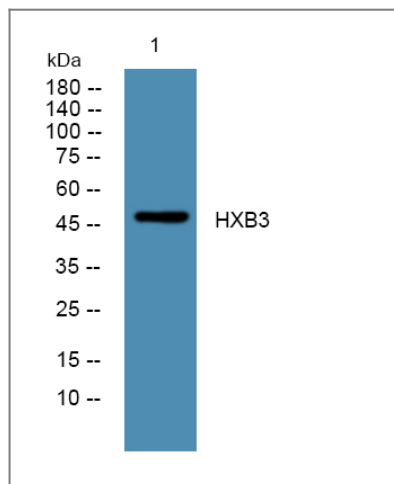
**Specificity** HXB3 Polyclonal Antibody detects endogenous levels of protein.

### | Target Information

**Gene name** HOXB3 HOX2G

<b>Protein Name</b>	Homeobox protein Hox-B3 (Homeobox protein Hox-2.7) (Homeobox protein Hox-2G)		
	<b>Organism</b>	<b>Gene ID</b>	<b>UniProt ID</b>
	Human	<a href="#">3213;</a>	<a href="#">P14651;</a>
	Mouse		<a href="#">P09026;</a>
<b>Cellular Localization</b>	Nucleus.		
<b>Tissue specificity</b>	Placenta,		
<b>Function</b>	developmental stage:Expressed in whole embryos and fetuses at 5-9 weeks from conception.,Function:Sequence-specific transcription factor which is part of a developmental regulatory system that provides cells with specific positional identities on the anterior-posterior axis.,similarity:Belongs to the Antp homeobox family.,similarity:Contains 1 homeobox DNA-binding domain.,		

## Validation Data



Western blot analysis of lysates from K562 cells, primary antibody was diluted at 1:1000, 4°over night

## Contact information

Orders: [order@immunoway.com](mailto:order@immunoway.com)  
 Support: [tech@immunoway.com](mailto:tech@immunoway.com)  
 Telephone: 877-594-3616 (Toll Free), 408-747-0185  
 Website: <http://www.immunoway.com>  
 Address: 2200 Ringwood Ave San Jose, CA 95131 USA



Please scan the QR code to access additional product information:  
**HXB3 Rabbit pAb**