

HXB1 Rabbit pAb

CatalogNo: YN0777

Key Features

Host Species

- Rabbit

Reactivity

- Human, Mouse

Applications

- WB, ELISA

MW

- 33kD (Observed)

Isotype

- IgG

Recommended Dilution Ratios

WB 1:500-2000

ELISA 1:5000-20000

Storage

Storage* -15°C to -25°C/1 year (Do not lower than -25°C)

Formulation Liquid in PBS containing 50% glycerol, and 0.02% sodium azide.

Basic Information

Clonality Polyclonal

Immunogen Information

Immunogen Synthesized peptide derived from part region of human protein

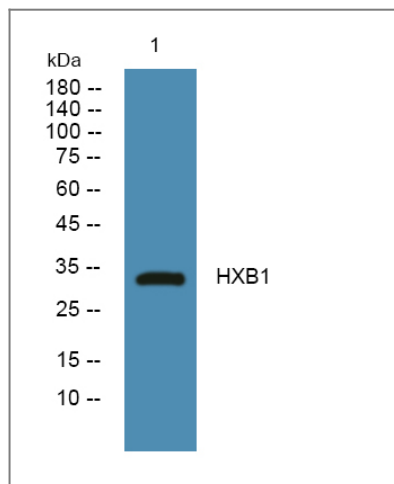
Specificity HXB1 Polyclonal Antibody detects endogenous levels of protein.

Target Information

Gene name HOXB1 HOX2I

Protein Name	Homeobox protein Hox-B1 (Homeobox protein Hox-2I)		
	Organism	Gene ID	UniProt ID
	Human	3211;	P14653;
	Mouse		P17919;
Cellular Localization	Nucleus.		
Tissue specificity	PCR rescued clones,		
Function	Function:Sequence-specific transcription factor which is part of a developmental regulatory system that provides cells with specific positional identities on the anterior-posterior axis. Acts on the anterior body structures.,polymorphism:The two common alleles; HOX1B*A and HOX1B*B have a frequency of 78.8% and 21.2% respectively.,similarity:Belongs to the Antp homeobox family. Labial subfamily.,similarity:Contains 1 homeobox DNA-binding domain.,		

Validation Data



Western blot analysis of lysates from Jurkat cells, primary antibody was diluted at 1:1000, 4° over night

Contact information

Orders: order@immunoway.com
 Support: tech@immunoway.com
 Telephone: 877-594-3616 (Toll Free), 408-747-0185
 Website: <http://www.immunoway.com>
 Address: 2200 Ringwood Ave San Jose, CA 95131 USA



Please scan the QR code to access additional product information:
HXB1 Rabbit pAb