

DQB2 Rabbit pAb

CatalogNo: YN0767

Key Features

Host Species

- Rabbit

Reactivity

- Human

Applications

- WB,ELISA

MW

- 29kD (Observed)

Isotype

- IgG

Recommended Dilution Ratios

WB 1:500-2000

ELISA 1:5000-20000

Storage

Storage* -15°C to -25°C/1 year(Do not lower than -25°C)

Formulation Liquid in PBS containing 50% glycerol,0.5% BSA and 0.02% sodium azide.

Basic Information

Clonality Polyclonal

Immunogen Information

Immunogen Synthesized peptide derived from part region of human protein

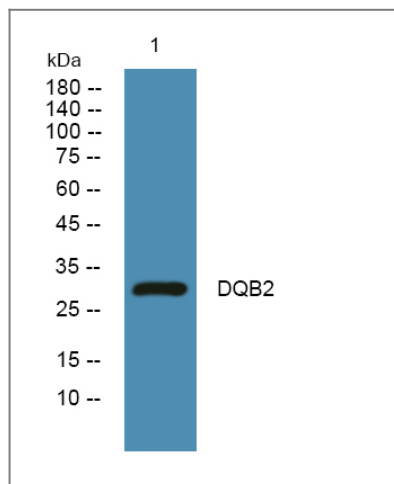
Specificity DQB2 Polyclonal Antibody detects endogenous levels of protein.

Target Information

Gene name HLA-DQB2 HLA-DXB

Protein Name	HLA class II histocompatibility antigen, DQ beta 2 chain (HLA class II histocompatibility antigen, DX beta chain) (MHC class II antigen DQB2)		
	Organism	Gene ID	UniProt ID
	Human		P05538 ;
Cellular Localization	Cell membrane ; Single-pass type I membrane protein . Endoplasmic reticulum membrane ; Single-pass type I membrane protein . Golgi apparatus, trans-Golgi network membrane ; Single-pass type I membrane protein . Endosome membrane ; Single-pass type I membrane protein . Lysosome membrane ; Single-pass type I membrane protein . The MHC class II complex transits through a number of intracellular compartments in the endocytic pathway until it reaches the cell membrane for antigen presentation.		
Tissue specificity	Restricted to skin Langerhans cells (at protein level).		

Validation Data



Western blot analysis of lysates from Jurkat cells, primary antibody was diluted at 1:1000, 4° over night

Contact information

Orders: order@immunoway.com
 Support: tech@immunoway.com
 Telephone: 877-594-3616 (Toll Free), 408-747-0185
 Website: <http://www.immunoway.com>
 Address: 2200 Ringwood Ave San Jose, CA 95131 USA



Please scan the QR code to access additional product information:
DQB2 Rabbit pAb