

GNA11 Rabbit pAb

CatalogNo: YN0757

| Key Features

Host Species

- Rabbit

Reactivity

- Human,Rat,Mouse

Applications

- WB,ELISA

MW

- 39kD (Observed)

Isotype

- IgG

| Recommended Dilution Ratios

WB 1:500-2000

ELISA 1:5000-20000

| Storage

Storage* -15°C to -25°C/1 year(Do not lower than -25°C)

Formulation Liquid in PBS containing 50% glycerol, and 0.02% sodium azide.

| Basic Information

Clonality Polyclonal

| Immunogen Information

Immunogen Synthesized peptide derived from part region of human protein

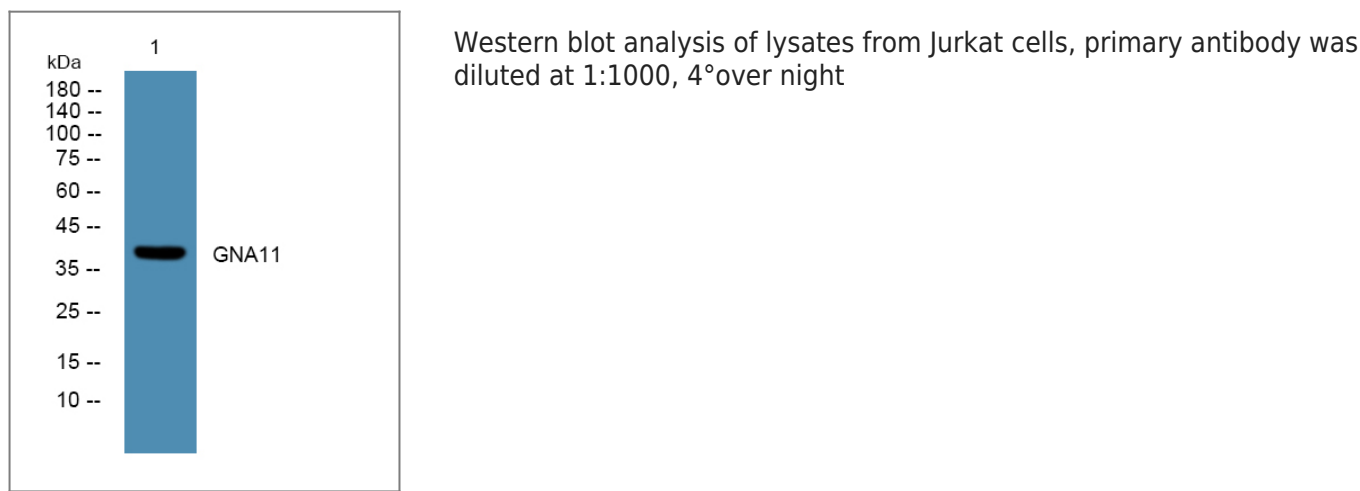
Specificity GNA11 Polyclonal Antibody detects endogenous levels of protein.

| Target Information

Gene name GNA11 GA11

Protein Name	Guanine nucleotide-binding protein subunit alpha-11 (G alpha-11) (G-protein subunit alpha-11) (Guanine nucleotide-binding protein G(y) subunit alpha)		
	Organism	Gene ID	UniProt ID
	Human	2767;	P29992;
	Mouse		P21278;
	Rat		Q9JID2;
Cellular Localization	Cell membrane ; Lipid-anchor . Cytoplasm . In testicular cells, expressed exclusively in the cytoplasm.		
Tissue specificity	Expressed in testis.		
Function	Function:Guanine nucleotide-binding proteins (G proteins) are involved as modulators or transducers in various transmembrane signaling systems. Acts as an activator of phospholipase C.,similarity:Belongs to the G-alpha family. G(q) subfamily.,subunit:G proteins are composed of 3 units; alpha, beta and gamma. The alpha chain contains the guanine nucleotide binding site.,		

Validation Data



Contact information

Orders: order@immunoway.com
 Support: tech@immunoway.com
 Telephone: 877-594-3616 (Toll Free), 408-747-0185
 Website: <http://www.immunoway.com>
 Address: 2200 Ringwood Ave San Jose, CA 95131 USA



Please scan the QR code to access additional product information:
GNA11 Rabbit pAb

