

## GNAO Rabbit pAb

CatalogNo: YN0756

### Key Features

#### Host Species

- Rabbit

#### Reactivity

- Human, Mouse, Rat

#### Applications

- WB, ELISA

#### MW

- 38kD (Observed)

#### Isotype

- IgG

### Recommended Dilution Ratios

WB 1:500-2000

ELISA 1:5000-20000

### Storage

**Storage\*** -15°C to -25°C/1 year (Do not lower than -25°C)

**Formulation** Liquid in PBS containing 50% glycerol, and 0.02% sodium azide.

### Basic Information

**Clonality** Polyclonal

### Immunogen Information

**Immunogen** Synthesized peptide derived from part region of human protein

**Specificity** GNAO Polyclonal Antibody detects endogenous levels of protein.

### Target Information

**Gene name** GNAO1

**Protein Name** Guanine nucleotide-binding protein G(o) subunit alpha

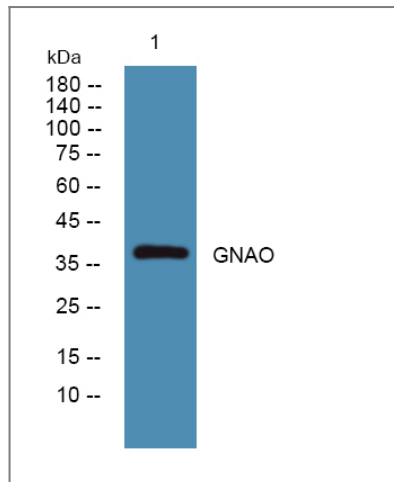
Organism	Gene ID	UniProt ID
Human	<a href="#">2775;</a>	<a href="#">P09471;</a>
Mouse		<a href="#">P18872;</a>
Rat		<a href="#">P59215;</a>

**Cellular Localization** Cell membrane . Membrane ; Lipid-anchor .

**Tissue specificity** Brain,Endometrium,Myometrium,

**Function** Function:Guanine nucleotide-binding proteins (G proteins) are involved as modulators or transducers in various transmembrane signaling systems. The G(o) protein function is not clear.,similarity:Belongs to the G-alpha family. G(i/o/t/z) subfamily.,subunit:G proteins are composed of 3 units; alpha, beta and gamma. The alpha chain contains the guanine nucleotide binding site.,

## Validation Data



Western blot analysis of lysates from HCT116 cells, primary antibody was diluted at 1:1000, 4°over night

## Contact information

Orders: [order@immunoway.com](mailto:order@immunoway.com)  
Support: [tech@immunoway.com](mailto:tech@immunoway.com)  
Telephone: 877-594-3616 (Toll Free), 408-747-0185  
Website: <http://www.immunoway.com>  
Address: 2200 Ringwood Ave San Jose, CA 95131 USA



Please scan the QR code to access additional product information:  
**GNAO Rabbit pAb**

