

## REM2 Rabbit pAb

CatalogNo: YN0747

### Key Features

#### Host Species

- Rabbit

#### Reactivity

- Human, Mouse, Rat

#### Applications

- WB, ELISA

#### MW

- 37kD (Observed)

#### Isotype

- IgG

### Storage

#### Storage\*

-15°C to -25°C/1 year (Do not lower than -25°C)

#### Formulation

Liquid in PBS containing 50% glycerol, 0.5% BSA and 0.02% sodium azide.

### Recommended Dilution Ratios

WB 1:500-2000

ELISA 1:5000-20000

### Basic Information

#### Clonality

Polyclonal

### Immunogen Information

#### Immunogen

Synthesized peptide derived from part region of human protein

#### Specificity

REM2 Polyclonal Antibody detects endogenous levels of protein.

### Target Information

#### Gene name

REM2

**Protein Name**

GTP-binding protein REM 2 (Rad and Gem-like GTP-binding protein 2)

Organism	Gene ID	UniProt ID
Human	<a href="#">161253</a> ;	<a href="#">Q8IYK8</a> ;
Mouse		<a href="#">Q8VEL9</a> ;
Rat		<a href="#">Q9WTY2</a> ;

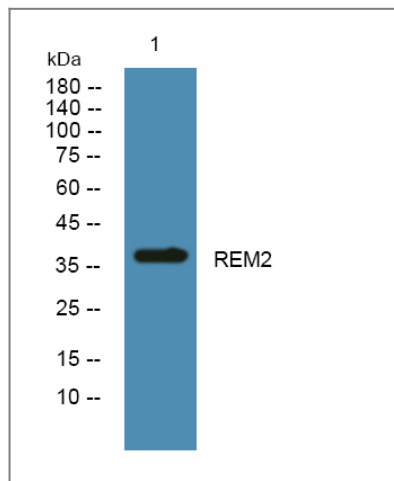
**Cellular Localization**

Cell membrane .

**Tissue specificity** Ovary,**Function**

Caution:It is uncertain whether Met-1 or Met-59 is the initiator.,Function:Binds GTP saturably and exhibits a low intrinsic rate of GTP hydrolysis.,similarity:Belongs to the small GTPase superfamily. RGK family.,

## Validation Data



Western blot analysis of lysates from A431 cells, primary antibody was diluted at 1:1000, 4° over night

## Contact information

Orders: [order@immunoway.com](mailto:order@immunoway.com)  
Support: [tech@immunoway.com](mailto:tech@immunoway.com)  
Telephone: 877-594-3616 (Toll Free), 408-747-0185  
Website: <http://www.immunoway.com>  
Address: 2200 Ringwood Ave San Jose, CA 95131 USA



Please scan the QR code to access additional product information:  
**REM2 Rabbit pAb**