

## DIRA2 Rabbit pAb

CatalogNo: YN0743

### Key Features

**Host Species**

- Rabbit

**Reactivity**

- Human, Mouse

**Applications**

- WB, ELISA

**MW**

- 21kD (Observed)

**Isotype**

- IgG

### Storage

**Storage\*** -15°C to -25°C/1 year (Do not lower than -25°C)**Formulation** Liquid in PBS containing 50% glycerol, 0.5% BSA and 0.02% sodium azide.

### Recommended Dilution Ratios

**WB 1:500-2000****ELISA 1:5000-20000**

### Basic Information

**Clonality** Polyclonal

### Immunogen Information

**Immunogen** Synthesized peptide derived from part region of human protein**Specificity** DIRA2 Polyclonal Antibody detects endogenous levels of protein.

### Target Information

**Gene name** DIRAS2

**Protein Name** GTP-binding protein Di-Ras2 (Distinct subgroup of the Ras family member 2)

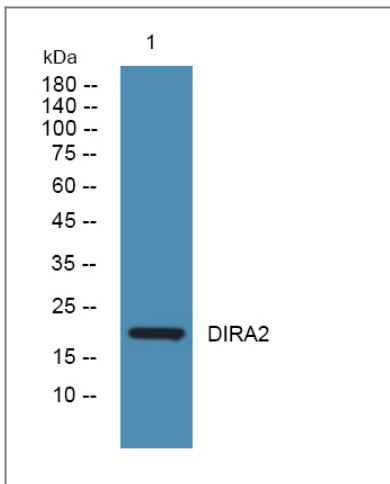
Organism	Gene ID	UniProt ID
Human	<a href="#">54769;</a>	<a href="#">Q96HU8;</a>
Mouse		<a href="#">Q5PR73;</a>

**Cellular Localization** Cell membrane ; Lipid-anchor ; Cytoplasmic side .

**Tissue specificity** Highly expressed in brain.

**Function** Function:Displays low GTPase activity and exist predominantly in the GTP-bound form.,similarity:Belongs to the small GTPase superfamily. Di-Ras family.,tissue specificity:Highly expressed in brain.,

## Validation Data



Western blot analysis of lysates from HCT116 cells, primary antibody was diluted at 1:1000, 4°over night

## Contact information

Orders: [order@immunoway.com](mailto:order@immunoway.com)  
Support: [tech@immunoway.com](mailto:tech@immunoway.com)  
Telephone: 877-594-3616 (Toll Free), 408-747-0185  
Website: <http://www.immunoway.com>  
Address: 2200 Ringwood Ave San Jose, CA 95131 USA



Please scan the QR code to access additional product information:  
**DIRA2 Rabbit pAb**