

GIMA7 Rabbit pAb

CatalogNo: YN0739

Key Features

Host Species

- Rabbit

Reactivity

- Human

Applications

- WB,ELISA

MW

- 33kD (Observed)

Isotype

- IgG

Recommended Dilution Ratios

WB 1:500-2000

ELISA 1:5000-20000

Storage

Storage* -15°C to -25°C/1 year(Do not lower than -25°C)

Formulation Liquid in PBS containing 50% glycerol,0.5% BSA and 0.02% sodium azide.

Basic Information

Clonality Polyclonal

Immunogen Information

Immunogen Synthesized peptide derived from part region of human protein

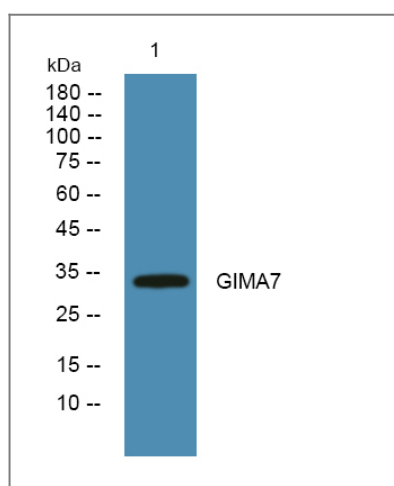
Specificity GIMA7 Polyclonal Antibody detects endogenous levels of protein.

Target Information

Gene name GIMAP7 IAN7

| | | | |
|------------------------------|---|--------------------------|--------------------------|
| Protein Name | GTPase IMAP family member 7 (Immunity-associated nucleotide 7 protein) (IAN-7) | | |
| | Organism | Gene ID | UniProt ID |
| | Human | 168537 ; | Q8NHV1 ; |
| Cellular Localization | Lipid droplet . Cytoplasm . Endoplasmic reticulum . Golgi apparatus . Colocalizes with GIMAP2 on the surface of cytoplasmic lipid droplets. | | |
| Tissue specificity | Most abundantly expressed in spleen, lymph nodes, and fetal kidney, but also present in the heart and the small intestine. Lower expression levels are found in lung, kidney, liver, and thyroid, salivary, and mammary glands. Also detected in the thymus (PubMed:15474311). Detected in T-cells (PubMed:23454188). | | |
| Function | similarity:Belongs to the IAN GTP-binding protein family., | | |

Validation Data



Western blot analysis of lysates from A431 cells, primary antibody was diluted at 1:1000, 4° over night

Contact information

Orders: order@immunoway.com
 Support: tech@immunoway.com
 Telephone: 877-594-3616 (Toll Free), 408-747-0185
 Website: <http://www.immunoway.com>
 Address: 2200 Ringwood Ave San Jose, CA 95131 USA



Please scan the QR code to access additional product information:
GIMA7 Rabbit pAb