

## EF1D Rabbit pAb

CatalogNo: YN0695

### Key Features

#### Host Species

- Rabbit

#### Reactivity

- Human, Mouse, Rat

#### Applications

- WB, ELISA

#### MW

- 30kD (Observed)

#### Isotype

- IgG

### Recommended Dilution Ratios

WB 1:500-2000

ELISA 1:5000-20000

### Storage

**Storage\*** -15°C to -25°C/1 year (Do not lower than -25°C)

**Formulation** Liquid in PBS containing 50% glycerol, 0.5% BSA and 0.02% sodium azide.

### Basic Information

**Clonality** Polyclonal

### Immunogen Information

**Immunogen** Synthesized peptide derived from part region of human protein

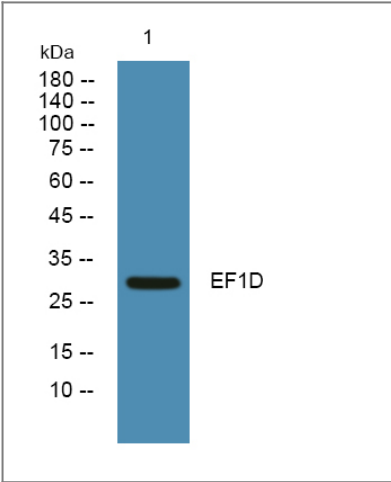
**Specificity** EF1D Polyclonal Antibody detects endogenous levels of protein.

### Target Information

**Gene name** EEF1D EF1D

<b>Protein Name</b>	Elongation factor 1-delta (EF-1-delta) (Antigen NY-CO-4)		
	<b>Organism</b>	<b>Gene ID</b>	<b>UniProt ID</b>
	Human	<a href="#">1936;</a>	<a href="#">P29692;</a>
	Mouse		<a href="#">P57776;</a>
	Rat		<a href="#">Q68FR9;</a>
<b>Cellular Localization</b>	[Isoform 2]: Nucleus .		
<b>Tissue specificity</b>	Isoform 2 is specifically expressed in brain, cerebellum and testis.		
<b>Function</b>	Function:EF-1-beta and EF-1-delta stimulate the exchange of GDP bound to EF-1-alpha to GTP.,PTM:Phosphorylated upon DNA damage, probably by ATM or ATR.,similarity:Belongs to the EF-1-beta/EF-1-delta family.,subunit:EF-1 is composed of 4 subunits: alpha, beta, delta, and gamma.,		

Validation Data



Western blot analysis of lysates from SH-SY5Y cells, primary antibody was diluted at 1:1000, 4°over night

Contact information

Orders: order@immunoway.com  
Support: tech@immunoway.com  
Telephone: 877-594-3616 (Toll Free), 408-747-0185  
Website: http://www.immunoway.com  
Address: 2200 Ringwood Ave San Jose, CA 95131 USA



Please scan the QR code to access additional product information:  
**EF1D Rabbit pAb**

