

HECD1 Rabbit pAb

CatalogNo: YN0678

Key Features

Host Species

- Rabbit

Reactivity

- Human, Mouse

Applications

- IHC, IF

MW

- 287kD (Observed)

Isotype

- IgG

Recommended Dilution Ratios

IHC 1:50-300

IF 1:50-200

Storage

Storage* -15°C to -25°C/1 year (Do not lower than -25°C)

Formulation Liquid in PBS containing 50% glycerol, 0.5% BSA and 0.02% sodium azide.

Basic Information

Clonality Polyclonal

Immunogen Information

Immunogen Synthesized peptide derived from part region of human protein

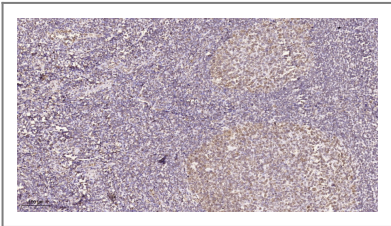
Specificity HECD1 Polyclonal Antibody detects endogenous levels of protein.

Target Information

Gene name HECTD1 KIAA1131

Protein Name	E3 ubiquitin-protein ligase HECTD1 (E3 ligase for inhibin receptor) (EULIR) (HECT domain-containing protein 1)		
	Organism	Gene ID	UniProt ID
	Human	25831 ;	Q9ULT8 ;
	Mouse		Q69ZR2 ;
Cellular Localization	nucleus,cytoplasm,		
Tissue specificity	Bone,Brain,Muscle,Ovary,Testis,Urinary bladder,		
Function	Function:Probable E3 ubiquitin-protein ligase which accepts ubiquitin from an E2 ubiquitin-conjugating enzyme in the form of a thioester and then directly transfers the ubiquitin to targeted substrates.,pathway:Protein modification; protein ubiquitination.,similarity:Belongs to the UPL family. K-HECT subfamily.,similarity:Contains 1 HECT (E6AP-type E3 ubiquitin-protein ligase) domain.,similarity:Contains 1 MIB/HERC2 domain.,similarity:Contains 4 ANK repeats.,		

Validation Data



Immunohistochemical analysis of paraffin-embedded human tonsil. 1, Tris-EDTA,pH9.0 was used for antigen retrieval. 2 Antibody was diluted at 1:200(4° overnight.3,Secondary antibody was diluted at 1:200(room temperature, 45min).

Contact information

Orders: order@immunoway.com
Support: tech@immunoway.com
Telephone: 877-594-3616 (Toll Free), 408-747-0185
Website: <http://www.immunoway.com>
Address: 2200 Ringwood Ave San Jose, CA 95131 USA



Please scan the QR code to access additional product information:
HECD1 Rabbit pAb

For Research Use Only. Not for Use in Diagnostic Procedures.

[Antibody](#) | [ELISA Kits](#) | [Protein](#) | [Reagents](#)