

RPC6 Rabbit pAb

CatalogNo: YN0663

Key Features

Host Species

- Rabbit

Reactivity

- Human, Mouse

Applications

- WB, ELISA

MW

- 34kD (Observed)

Isotype

- IgG

Recommended Dilution Ratios

WB 1:500-2000

ELISA 1:5000-20000

Storage

Storage* -15°C to -25°C/1 year (Do not lower than -25°C)

Formulation Liquid in PBS containing 50% glycerol, 0.5% BSA and 0.02% sodium azide.

Basic Information

Clonality Polyclonal

Immunogen Information

Immunogen Synthesized peptide derived from part region of human protein

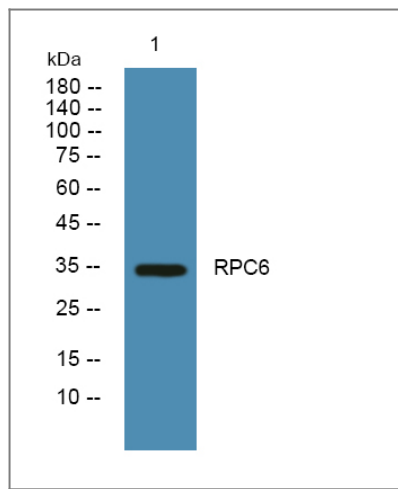
Specificity RPC6 Polyclonal Antibody detects endogenous levels of protein.

Target Information

Gene name POLR3F

Protein Name	DNA-directed RNA polymerase III subunit RPC6 (RNA polymerase III subunit C6) (DNA-directed RNA polymerase III subunit F) (RNA polymerase III 39 kDa subunit) (RPC39)		
	Organism	Gene ID	UniProt ID
	Human	10621 ;	Q9H1D9 ;
	Mouse		Q921X6 ;
Cellular Localization	Nucleus .		
Tissue specificity	Brain,Kidney,Synovial membrane,		
Function	Function:DNA-dependent RNA polymerase catalyzes the transcription of DNA into RNA using the four ribonucleoside triphosphates as substrates. Specific peripheric component of RNA polymerase III which synthesizes small RNAs, such as 5S rRNA and tRNAs. May direct RNA Pol III binding to the TFIIIB-DNA complex.,similarity:Belongs to the eukaryotic RPC34/RPC39 RNA polymerase subunit family.,subunit:Component of the RNA polymerase III (Pol III) complex consisting of 17 subunits. RPC3/POLR3C, RPC6/POLR3F and RPC7/POLR3G form a Pol III subcomplex (By similarity). Interacts with TBP and TFIIIB90 and GTF3C4.,		

Validation Data



Western blot analysis of lysates from KB cells, primary antibody was diluted at 1:1000, 4°over night

Contact information

Orders: order@immunoway.com
Support: tech@immunoway.com
Telephone: 877-594-3616 (Toll Free), 408-747-0185
Website: http://www.immunoway.com
Address: 2200 Ringwood Ave San Jose, CA 95131 USA



Please scan the QR code to access additional product information:
RPC6 Rabbit pAb

