

RPC10 Rabbit pAb

CatalogNo: YN0662

Key Features

Host Species

- Rabbit

Reactivity

- Human, Mouse

Applications

- WB, ELISA

MW

- 11kD (Observed)

Isotype

- IgG

Storage

Storage* -15°C to -25°C/1 year (Do not lower than -25°C)

Formulation Liquid in PBS containing 50% glycerol, 0.5% BSA and 0.02% sodium azide.

Recommended Dilution Ratios

WB 1:500-2000

ELISA 1:5000-20000

Basic Information

Clonality Polyclonal

Immunogen Information

Immunogen Synthesized peptide derived from part region of human protein AA range: 51-100

Specificity RPC10 Polyclonal Antibody detects endogenous levels of protein.

Target Information

Gene name POLR3K RPC11 My010

Protein Name DNA-directed RNA polymerase III subunit RPC10 (RNA polymerase III subunit C10) (DNA-directed RNA polymerase III subunit K) (RNA polymerase III 12.5 kDa subunit) (RPC12.5) (RNA polymerase III subunit C11) (HsC11p) (RPC11) (hRPC11)

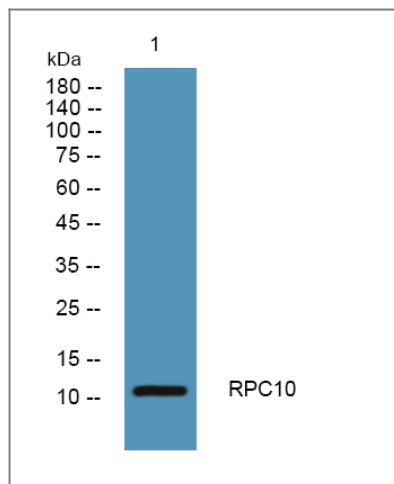
Organism	Gene ID	UniProt ID
Human	51728;	Q9Y2Y1;
Mouse		Q9CQZ7;

Cellular Localization Nucleus, nucleolus .

Tissue specificity Fetal brain,Uterus,

Function Function:DNA-dependent RNA polymerase catalyzes the transcription of DNA into RNA using the four ribonucleoside triphosphates as substrates. Component of RNA polymerase III which synthesizes small RNAs, such as 5S rRNA and tRNAs.,similarity:Belongs to the archaeal rpoM/eukaryotic RPA12/RPB9/RPC11 RNA polymerase family.,similarity:Contains 1 TFIIIS-type zinc finger.,subunit:Component of the RNA polymerase III (Pol III) complex consisting of 17 subunits.,

Validation Data



Western blot analysis of lysates from Jurkat cells, primary antibody was diluted at 1:1000, 4° over night

Contact information

Orders: order@immunoway.com
Support: tech@immunoway.com
Telephone: 877-594-3616 (Toll Free), 408-747-0185
Website: <http://www.immunoway.com>
Address: 2200 Ringwood Ave San Jose, CA 95131 USA



Please scan the QR code to access additional product information:
RPC10 Rabbit pAb

