

RPB4 Rabbit pAb

CatalogNo: YN0659

Key Features

Host Species

- Rabbit

Reactivity

- Human, Mouse

Applications

- WB, ELISA

MW

- 15kD (Observed)

Isotype

- IgG

Recommended Dilution Ratios

WB 1:500-2000

ELISA 1:5000-20000

Storage

Storage* -15°C to -25°C/1 year (Do not lower than -25°C)

Formulation Liquid in PBS containing 50% glycerol, 0.5% BSA and 0.02% sodium azide.

Basic Information

Clonality Polyclonal

Immunogen Information

Immunogen Synthesized peptide derived from part region of human protein

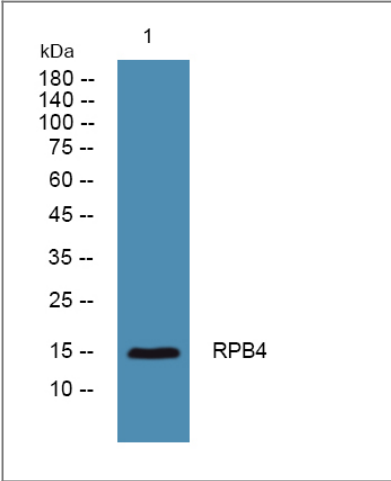
Specificity RPB4 Polyclonal Antibody detects endogenous levels of protein.

Target Information

Gene name POLR2D

Protein Name	DNA-directed RNA polymerase II subunit RPB4 (RNA polymerase II subunit B4) (DNA-directed RNA polymerase II subunit D) (RNA polymerase II 16 kDa subunit) (RPB16)		
	Organism	Gene ID	UniProt ID
	Human	5433 ;	O15514 ;
	Mouse		Q9D7M8 ;
Cellular Localization	Nucleus .		
Tissue specificity	Cervix carcinoma,Lung,Lymph,Skin,		
Function	<p>Function:DNA-dependent RNA polymerase catalyzes the transcription of DNA into RNA using the four ribonucleoside triphosphates as substrates. Component of RNA polymerase II which synthesizes mRNA precursors and many functional non-coding RNAs. Pol II is the central component of the basal RNA polymerase II transcription machinery. It is composed of mobile elements that move relative to each other. RPB4 is part of a subcomplex with RPB7 that binds to a pocket formed by RPB1, RPB2 and RPB6 at the base of the clamp element. The RBP4-RPB7 subcomplex seems to lock the clamp via RPB7 in the closed conformation thus preventing double stranded DNA to enter the active site cleft. The RPB4-RPB7 subcomplex binds single-stranded DNA and RNA.,similarity:Belongs to the eukaryotic RPB4 RNA polymerase subunit family.,subunit:Component of the RNA polymerase II (Pol II) complex consisting of 12 subunits. RPB4 and RPB7 form a subcomplex that protrudes from the 10-subunit Pol II core complex.,</p>		

Validation Data



Western blot analysis of lysates from Jurkat cells, primary antibody was diluted at 1:1000, 4°over night

Contact information

Orders: order@immunoway.com
Support: tech@immunoway.com
Telephone: 877-594-3616 (Toll Free), 408-747-0185
Website: <http://www.immunoway.com>
Address: 2200 Ringwood Ave San Jose, CA 95131 USA



Please scan the QR code
to access additional
product information:
RPB4 Rabbit pAb

For Research Use Only. Not for Use in Diagnostic Procedures.

[Antibody](#) | [ELISA Kits](#) | [Protein](#) | [Reagents](#)