

CSN7A Rabbit pAb

CatalogNo: YN0621

Key Features

Host Species

- Rabbit

Reactivity

- Human, Mouse

Applications

- WB, ELISA

MW

- 30kD (Observed)

Isotype

- IgG

Recommended Dilution Ratios

WB 1:500-2000

ELISA 1:5000-20000

Storage

Storage* -15°C to -25°C/1 year (Do not lower than -25°C)

Formulation Liquid in PBS containing 50% glycerol, 0.5% BSA and 0.02% sodium azide.

Basic Information

Clonality Polyclonal

Immunogen Information

Immunogen Synthesized peptide derived from part region of human protein

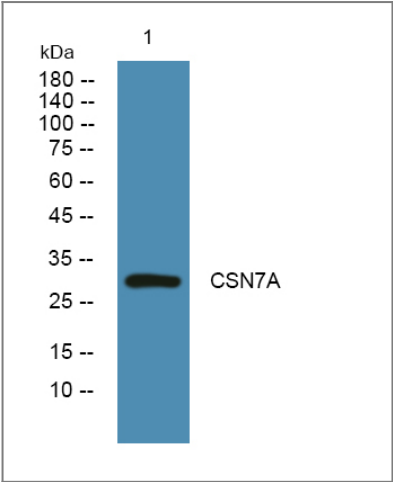
Specificity CSN7A Polyclonal Antibody detects endogenous levels of protein.

Target Information

Gene name COPS7A CSN7A DERP10

Protein Name	COP9 signalosome complex subunit 7a (SGN7a) (Signalosome subunit 7a) (Dermal papilla-derived protein 10) (JAB1-containing signalosome subunit 7a)		
	Organism	Gene ID	UniProt ID
	Human	50813 ;	Q9UBW8 ;
	Mouse		Q9CZ04 ;
Cellular Localization	Cytoplasm . Nucleus .		
Tissue specificity	Widely expressed. Expressed at high level in brain, heart and skeletal muscle.		
Function	<p>Function:Component of the COP9 signalosome complex (CSN), a complex involved in various cellular and developmental processes. The CSN complex is an essential regulator of the ubiquitin (Ubl) conjugation pathway by mediating the deneddylation of the cullin subunits of SCF-type E3 ligase complexes, leading to decrease the Ubl ligase activity of SCF-type complexes such as SCF, CSA or DDB2. The complex is also involved in phosphorylation of p53/TP53, c-jun/JUN, IkappaBalpha/NFKBIA, ITPK1 and IRF8/ICSBP, possibly via its association with CK2 and PKD kinases. CSN-dependent phosphorylation of TP53 and JUN promotes and protects degradation by the Ubl system, respectively.,PTM:Phosphorylated by CK2 and PKD kinases. Phosphorylated upon DNA damage, probably by ATM or ATR.,similarity:Belongs to the CSN7/EIF3M family. CSN7 subfamily.,similarity:Contains 1 PCI domain.,subunit:Component of the CSN complex, composed of COPS1/GPS1, COPS2, COPS3, COPS4, COPS5, COP6, COPS7 (COPS7A or COPS7B) and COPS8. In the complex, it probably interacts directly with COPS1, COPS2, COPS4, COPS5, COPS6 and COPS8. Interacts with PMF1. Interacts with the translation initiation factor EIF3S6. Interacts with CK2 and PKD. Interacts directly with ID3.,tissue specificity:Widely expressed. Expressed at high level in brain, heart and skeletal muscle.,</p>		

Validation Data



Western blot analysis of lysates from DU145 cells, primary antibody was diluted at 1:1000, 4°over night

Contact information

Orders: order@immunoway.com
Support: tech@immunoway.com
Telephone: 877-594-3616 (Toll Free), 408-747-0185
Website: http://www.immunoway.com
Address: 2200 Ringwood Ave San Jose, CA 95131 USA



Please scan the QR code
to access additional
product information:
CSN7A Rabbit pAb

For Research Use Only. Not for Use in Diagnostic Procedures.

[Antibody](#) | [ELISA Kits](#) | [Protein](#) | [Reagents](#)