

KIF4B Rabbit pAb

CatalogNo: YN0596

| Key Features

Host Species

- Rabbit

Reactivity

- Human

Applications

- WB,ELISA

MW

- 135kD (Observed)

Isotype

- IgG

| Recommended Dilution Ratios

WB 1:500-2000

ELISA 1:5000-20000

| Storage

Storage* -15°C to -25°C/1 year(Do not lower than -25°C)

Formulation Liquid in PBS containing 50% glycerol, and 0.02% sodium azide.

| Basic Information

Clonality Polyclonal

| Immunogen Information

Immunogen Synthesized peptide derived from part region of human protein

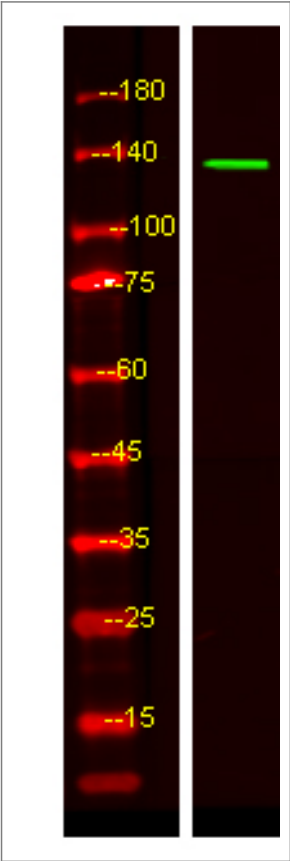
Specificity KIF4B Polyclonal Antibody detects endogenous levels of protein.

| Target Information

Gene name KIF4B

Protein Name	Chromosome-associated kinesin KIF4B (Chromokinesin-B)		
	Organism	Gene ID	UniProt ID
	Human	285643 ;	Q2VIQ3 ;
Cellular Localization	Nucleus matrix . Cytoplasm, cytoskeleton .		
Tissue specificity	Specifically expressed in testis.		
Function	<p>Function:Motor protein that translocates PRC1 to the plus ends of interdigitating spindle microtubules during the metaphase to anaphase transition, an essential step for the formation of an organized central spindle midzone and midbody and for successful cytokinesis. May play a role in mitotic chromosomal positioning and bipolar spindle stabilization.,sequence Caution:Contaminating sequence. Potential poly-A sequence.,similarity:Belongs to the kinesin-like protein family.,similarity:Belongs to the kinesin-like protein family. Chromokinesin subfamily.,similarity:Contains 1 kinesin-motor domain.,subcellular location:Not present in the nucleolus. In early mitosis, associated with the mitotic spindle, in anaphase, localized to the spindle midzone and, in telophase and cytokinesis, to the midbody. In late cytokinesis, found in the center of the midbody. Associated with chromosomes at all stages of mitosis.,subunit:Interacts with unphosphorylated PRC1 during late mitosis.,tissue specificity:Highly expressed in hematopoietic tissues, fetal liver, spleen, thymus and adult thymus and bone marrow. Lower levels are found in heart, testis, kidney, colon and lung.,tissue specificity:Specifically expressed in testis.,</p>		

| Validation Data



Western Blot analysis of HEK293 lysis, using primary antibody at 1:1000 dilution. Secondary antibody(catalog#:RS23920) was diluted at 1:10000

| Contact information

Orders: order@immunoway.com
Support: tech@immunoway.com
Telephone: 877-594-3616 (Toll Free), 408-747-0185
Website: <http://www.immunoway.com>
Address: 2200 Ringwood Ave San Jose, CA 95131 USA



Please scan the QR code
to access additional
product information:
KIF4B Rabbit pAb

For Research Use Only. Not for Use in Diagnostic Procedures.

[Antibody](#) | [ELISA Kits](#) | [Protein](#) | [Reagents](#)