

CEA19 Rabbit pAb

CatalogNo: YN0559

Key Features

Host Species

- Rabbit

Reactivity

- Human

Applications

- WB,ELISA

MW

- 33kD (Observed)

Isotype

- IgG

Recommended Dilution Ratios

WB 1:500-2000

ELISA 1:5000-20000

Storage

Storage* -15°C to -25°C/1 year(Do not lower than -25°C)

Formulation Liquid in PBS containing 50% glycerol,0.5% BSA and 0.02% sodium azide.

Basic Information

Clonality Polyclonal

Immunogen Information

Immunogen Synthesized peptide derived from part region of human protein

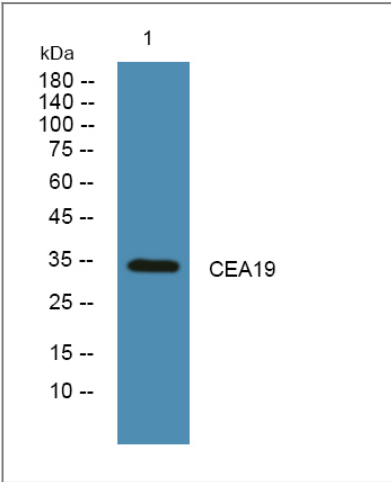
Specificity CEA19 Polyclonal Antibody detects endogenous levels of protein.

Target Information

Gene name CEACAM19 CEAL1 UNQ2973/PRO7436

Protein Name	Carcinoembryonic antigen-related cell adhesion molecule 19 (Carcinoembryonic antigen-like 1)		
	Organism	Gene ID	UniProt ID
	Human	56971 ;	Q7Z692 ;
Cellular Localization	Membrane ; Single-pass type I membrane protein .		
Tissue specificity	Ubiquitous with highest expression in prostate, uterus, fetal brain, mammary gland, adrenal gland, skeletal muscle, small intestine, and kidney, and lower expression in lung, cerebellum, testis, liver, pancreas, bone marrow and ovary.		
Function	induction:Down-regulated by dexamethasone (in vitro).,similarity:Belongs to the immunoglobulin superfamily. CEA family.,tissue specificity:Ubiquitous with highest expression in prostate, uterus, fetal brain, mammary gland, adrenal gland, skeletal muscle, small intestine, and kidney, and lower expression in lung, cerebellum, testis, liver, pancreas, bone marrow and ovary.,		

Validation Data



Western blot analysis of lysates from K562 cells, primary antibody was diluted at 1:1000, 4°over night

Contact information

Orders: order@immunoway.com
Support: tech@immunoway.com
Telephone: 877-594-3616 (Toll Free), 408-747-0185
Website: http://www.immunoway.com
Address: 2200 Ringwood Ave San Jose, CA 95131 USA



Please scan the QR code to access additional product information:
CEA19 Rabbit pAb

