

## CBPO Rabbit pAb

CatalogNo: YN0557

### Key Features

#### Host Species

- Rabbit

#### Reactivity

- Human

#### Applications

- WB,ELISA

#### MW

- 41kD (Observed)

#### Isotype

- IgG

### Recommended Dilution Ratios

**WB 1:500-2000**

**ELISA 1:5000-20000**

### Storage

**Storage\*** -15°C to -25°C/1 year(Do not lower than -25°C)

**Formulation** Liquid in PBS containing 50% glycerol,0.5% BSA and 0.02% sodium azide.

### Basic Information

**Clonality** Polyclonal

### Immunogen Information

**Immunogen** Synthesized peptide derived from part region of human protein

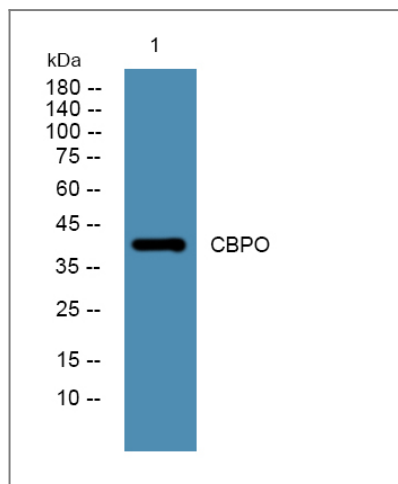
**Specificity** CBPO Polyclonal Antibody detects endogenous levels of protein.

### Target Information

**Gene name** CPO

<b>Protein Name</b>	Carboxypeptidase O (CPO) (EC 3.4.17.-)		
	<b>Organism</b>	<b>Gene ID</b>	<b>UniProt ID</b>
	Human	<a href="#">130749;</a>	<a href="#">Q8IVL8;</a>
<b>Cellular Localization</b>	Apical cell membrane ; Lipid-anchor, GPI-anchor .		
<b>Tissue specificity</b>	Detected in enterocytes of the ileum.		
<b>Function</b>	cofactor: Binds 1 zinc ion per subunit., Function: Probable carboxypeptidase which may cleave proteins with C-terminal acidic residues., similarity: Belongs to the peptidase M14 family.,		

## Validation Data



Western blot analysis of lysates from K562 cells, primary antibody was diluted at 1:1000, 4° over night

## Contact information

Orders: [order@immunoway.com](mailto:order@immunoway.com)  
 Support: [tech@immunoway.com](mailto:tech@immunoway.com)  
 Telephone: 877-594-3616 (Toll Free), 408-747-0185  
 Website: <http://www.immunoway.com>  
 Address: 2200 Ringwood Ave San Jose, CA 95131 USA



Please scan the QR code to access additional product information:  
**CBPO Rabbit pAb**