

CAH10 Rabbit pAb

CatalogNo: YN0551

Key Features

Host Species

- Rabbit

Reactivity

- Human, Mouse

Applications

- WB, ELISA

MW

- 36kD (Observed)

Isotype

- IgG

Recommended Dilution Ratios

WB 1:500-2000

ELISA 1:5000-20000

Storage

Storage* -15°C to -25°C/1 year (Do not lower than -25°C)

Formulation Liquid in PBS containing 50% glycerol, 0.5% BSA and 0.02% sodium azide.

Basic Information

Clonality Polyclonal

Immunogen Information

Immunogen Synthesized peptide derived from part region of human protein

Specificity CAH10 Polyclonal Antibody detects endogenous levels of protein.

Target Information

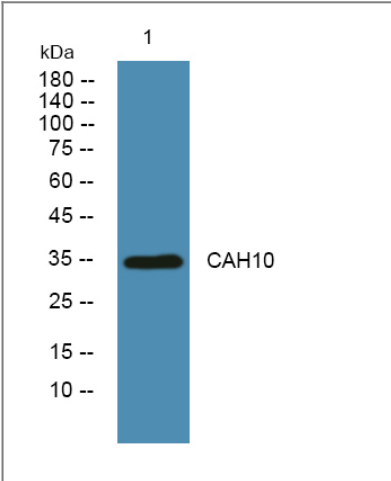
Gene name CA10 hucep-15 UNQ533/PRO1076

Protein Name	Carbonic anhydrase-related protein 10 (Carbonic anhydrase-related protein X) (CA-RP X) (CARP X) (Cerebral protein 15)		
	Organism	Gene ID	UniProt ID
	Human	56934;	Q9NS85;
	Mouse		P61215;

Tissue specificity Strong expression in brain and central nervous system.

Function developmental stage:Not expressed in fetal brain.,Function:Does not have a catalytic activity.,similarity:Belongs to the alpha-carbonic anhydrase family.,tissue specificity:Strong expression in brain and central nervous system.,

| Validation Data



Western blot analysis of lysates from K562 cells, primary antibody was diluted at 1:1000, 4°over night

| Contact information

Orders: order@immunoway.com
Support: tech@immunoway.com
Telephone: 877-594-3616 (Toll Free), 408-747-0185
Website: http://www.immunoway.com
Address: 2200 Ringwood Ave San Jose, CA 95131 USA



Please scan the QR code to access additional product information:
CAH10 Rabbit pAb