

CALL6 Rabbit pAb

CatalogNo: YN0535

Key Features

Host Species

- Rabbit

Reactivity

- Human

Applications

- WB, ELISA

MW

- 19kD (Observed)

Isotype

- IgG

Recommended Dilution Ratios

WB 1:500-2000

ELISA 1:5000-20000

Storage

Storage* -15°C to -25°C/1 year(Do not lower than -25°C)

Formulation Liquid in PBS containing 50% glycerol, 0.5% BSA and 0.02% sodium azide.

Basic Information

Clonality Polyclonal

Immunogen Information

Immunogen Synthesized peptide derived from part region of human protein

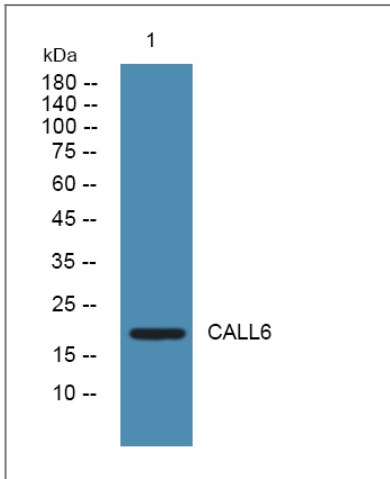
Specificity CALL6 Polyclonal Antibody detects endogenous levels of protein.

Target Information

Gene name CALML6 CAGLP CALGP

Protein Name	Calmodulin-like protein 6 (Calglandulin-like protein)		
	Organism	Gene ID	UniProt ID
	Human	163688;	Q8TD86;
Cellular Localization	Cytoplasm . Nucleus .		
Tissue specificity	Expressed in prostate, thymus, heart, skeleton muscle, bone marrow and ovary.		
Function	similarity:Belongs to the calmodulin family. Calglandulin subfamily.,similarity:Contains 4 EF-hand domains.,tissue specificity:Expressed in prostate, thymus, heart, skeleton muscle, bone marrow and ovary.,		

Validation Data



Western blot analysis of lysates from A431 cells, primary antibody was diluted at 1:1000, 4°over night

Contact information

Orders: order@immunoway.com
 Support: tech@immunoway.com
 Telephone: 877-594-3616 (Toll Free), 408-747-0185
 Website: <http://www.immunoway.com>
 Address: 2200 Ringwood Ave San Jose, CA 95131 USA



Please scan the QR code to access additional product information:
CALL6 Rabbit pAb