

## CALL3 Rabbit pAb

CatalogNo: YN0534

### Key Features

#### Host Species

- Rabbit

#### Reactivity

- Human, Mouse, Rat

#### Applications

- WB, ELISA

#### MW

- 16kD (Observed)

#### Isotype

- IgG

### Recommended Dilution Ratios

WB 1:500-2000

ELISA 1:5000-20000

### Storage

**Storage\*** -15°C to -25°C/1 year (Do not lower than -25°C)

**Formulation** Liquid in PBS containing 50% glycerol, 0.5% BSA and 0.02% sodium azide.

### Basic Information

**Clonality** Polyclonal

### Immunogen Information

**Immunogen** Synthesized peptide derived from part region of human protein

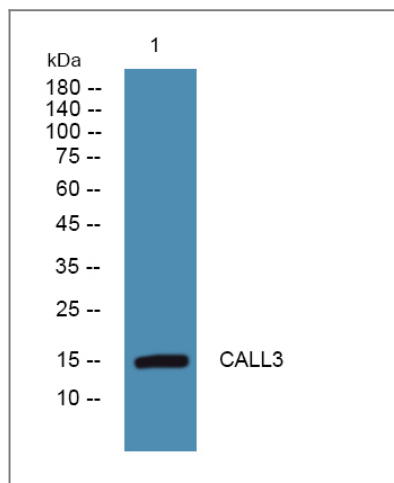
**Specificity** CALL3 Polyclonal Antibody detects endogenous levels of protein.

### Target Information

**Gene name** CALML3

<b>Protein Name</b>	Calmodulin-like protein 3 (CaM-like protein) (CLP) (Calmodulin-related protein NB-1)		
	<b>Organism</b>	<b>Gene ID</b>	<b>UniProt ID</b>
	Human	<a href="#">810;</a>	<a href="#">P27482;</a>
	Mouse		<a href="#">Q9D6P8;</a>
	Rat		<a href="#">Q5U206;</a>
<b>Cellular Localization</b>	extracellular exosome,		
<b>Tissue specificity</b>	Expressed in normal mammary, prostate, cervical, and epidermal tissues. It is greatly reduced or undetectable in transformed cells.		
<b>Function</b>	Function:May be similar to that of authentic calmodulin and may actually compete with calmodulin by binding, with different affinities, to cellular substrates.,induction:By human beta type transforming growth factor.,miscellaneous:Binds four calcium ions.,similarity:Belongs to the calmodulin family.,similarity:Contains 4 EF-hand domains.,tissue specificity:Expressed in normal mammary, prostate, cervical, and epidermal tissues. It is greatly reduced or undetectable in transformed cells.,		

## Validation Data



Western blot analysis of lysates from PC12 cells, primary antibody was diluted at 1:1000, 4° over night

## Contact information

Orders: [order@immunoway.com](mailto:order@immunoway.com)  
 Support: [tech@immunoway.com](mailto:tech@immunoway.com)  
 Telephone: 877-594-3616 (Toll Free), 408-747-0185  
 Website: <http://www.immunoway.com>  
 Address: 2200 Ringwood Ave San Jose, CA 95131 USA



Please scan the QR code to access additional product information:  
**CALL3 Rabbit pAb**

