

BSSP4 Rabbit pAb

CatalogNo: YN0513

Key Features

Host Species

- Rabbit

Reactivity

- Human, Mouse

Applications

- WB, ELISA

MW

- 34kD (Observed)

Isotype

- IgG

Recommended Dilution Ratios

WB 1:500-2000

ELISA 1:5000-20000

Storage

Storage* -15°C to -25°C/1 year (Do not lower than -25°C)

Formulation Liquid in PBS containing 50% glycerol, and 0.02% sodium azide.

Basic Information

Clonality Polyclonal

Immunogen Information

Immunogen Synthesized peptide derived from part region of human protein

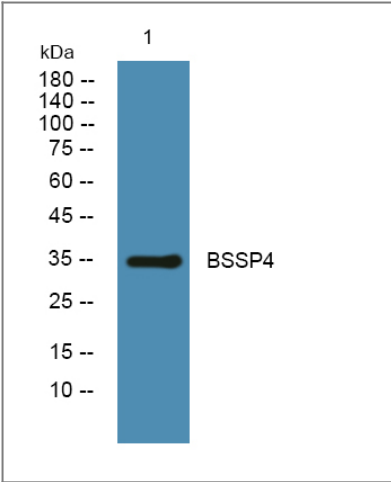
Specificity BSSP4 Polyclonal Antibody detects endogenous levels of protein.

Target Information

Gene name PRSS22 BSSP4 PRSS26 SP001LA UNQ302/PRO343

Protein Name	Brain-specific serine protease 4 (BSSP-4) (Serine protease 22) (Serine protease 26) (Tryptase epsilon)		
	Organism	Gene ID	UniProt ID
	Human	64063 ;	Q9GZN4 ;
	Mouse		Q9ER10 ;
Cellular Localization	Secreted .		
Tissue specificity	Expressed abundantly in the epithelial cells of the airways, including trachea, esophagus and fetal lung. Scarce in adult lung. Expressed at low levels in placenta, pancreas, prostate and thyroid gland.		
Function	Function:Preferentially cleaves the synthetic substrate H-D-Leu-Thr-Arg-pNA compared to tosyl-Gly-Pro-Arg-pNA.,similarity:Belongs to the peptidase S1 family.,similarity:Contains 1 peptidase S1 domain.,tissue specificity:Expressed abundantly in the epithelial cells of the airways, including trachea, esophagus and fetal lung. Scarce in adult lung. Expressed at low levels in placenta, pancreas, prostate and thyroid gland.,		

Validation Data



Western blot analysis of lysates from KB cells, primary antibody was diluted at 1:1000, 4°over night

Contact information

Orders: order@immunoway.com
Support: tech@immunoway.com
Telephone: 877-594-3616 (Toll Free), 408-747-0185
Website: http://www.immunoway.com
Address: 2200 Ringwood Ave San Jose, CA 95131 USA



Please scan the QR code to access additional product information:
BSSP4 Rabbit pAb

