

POPD1 Rabbit pAb

CatalogNo: YN0508

| Key Features

Host Species

- Rabbit

Reactivity

- Human, Mouse, Rat

Applications

- WB, ELISA

MW

- 39kD (Observed)

Isotype

- IgG

| Recommended Dilution Ratios

WB 1:500-2000

ELISA 1:5000-20000

| Storage

Storage* -15°C to -25°C/1 year (Do not lower than -25°C)

Formulation Liquid in PBS containing 50% glycerol, 0.5% BSA and 0.02% sodium azide.

| Basic Information

Clonality Polyclonal

| Immunogen Information

Immunogen Synthesized peptide derived from part region of human protein

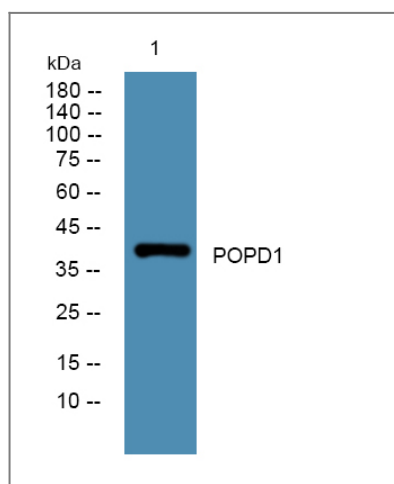
Specificity POPD1 Polyclonal Antibody detects endogenous levels of protein.

| Target Information

Gene name BVES POP1 POPDC1

Protein Name	Blood vessel epicardial substance (hBVES) (Popeye domain-containing protein 1) (Popeye protein 1)		
	Organism	Gene ID	UniProt ID
	Human	11149;	Q8NE79;
	Mouse		Q9ES83;
	Rat		Q3BCU4;
Cellular Localization	Lateral cell membrane . Cell junction, tight junction . Membrane ; Multi-pass membrane protein . Cell membrane, sarcolemma . Membrane, caveola . Colocalizes with VAMP3 at the cell-cell contact in cardiac and skeletal muscle (By similarity). Its movement from the cytoplasm to membrane is an early event occurring concurrently with cell-cell contact. Colocalizes in epithelial cells with OCLN and TJP1 in an apical-lateral position within the z axis. Detected at cell-cell contact but never observed at the free surface of epithelial cells. .		
Tissue specificity	Expressed in epithelial cells (at protein level). Expressed in fetal and adult heart and skeletal muscle.		
Function	Function:May play an important role in heart development.,similarity:Belongs to the popeye family.,tissue specificity:Expressed in fetal and adult heart and skeletal muscle.,		

Validation Data



Western blot analysis of lysates from SW480 cells, primary antibody was diluted at 1:1000, 4° over night

Contact information

Orders: order@immunoway.com
 Support: tech@immunoway.com
 Telephone: 877-594-3616 (Toll Free), 408-747-0185
 Website: <http://www.immunoway.com>
 Address: 2200 Ringwood Ave San Jose, CA 95131 USA



Please scan the QR code to access additional product information:
POPD1 Rabbit pAb

