

B4GT4 Rabbit pAb

CatalogNo: YN0502

| Key Features

Host Species

- Rabbit

Reactivity

- Human, Mouse, Rat

Applications

- WB, ELISA

MW

- 37kD (Observed)

Isotype

- IgG

| Recommended Dilution Ratios

WB 1:500-2000

ELISA 1:5000-20000

| Storage

Storage* -15°C to -25°C/1 year (Do not lower than -25°C)

Formulation Liquid in PBS containing 50% glycerol, 0.5% BSA and 0.02% sodium azide.

| Basic Information

Clonality Polyclonal

| Immunogen Information

Immunogen Synthesized peptide derived from part region of human protein

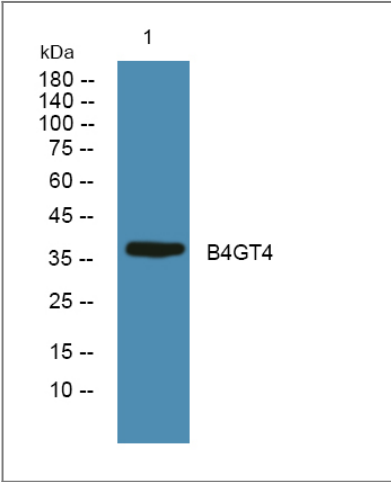
Specificity B4GT4 Polyclonal Antibody detects endogenous levels of protein.

| Target Information

Gene name B4GALT4 UNQ552/PRO1109

Protein Name	Beta-1,4-galactosyltransferase 4 (Beta-1,4-GalTase 4) (Beta4Gal-T4) (b4Gal-T4) (UDP-Gal:beta-GlcNAc beta-1,4-galactosyltransferase 4) (UDP-galactose:beta-N-acetylgalactosamine beta-1,4-galactosyltransferase 4) [Includes: N-acetyllactosamine synthase (Nal synthase); Lactotriaosylceramide beta-1,4-galactosyltransferase (Beta-N-acetylgalactosaminyl-glycolipid beta-1,4-galactosyltransferase)]		
	Organism	Gene ID	UniProt ID
	Human	8702;	O60513;
	Mouse		Q9JJ04;
	Rat		Q66HH1;
Cellular Localization	Golgi apparatus membrane ; Single-pass type II membrane protein . Secreted .		
Tissue specificity	Highest expression is observed in placenta, pancreas, kidney and heart (PubMed:9792633). Expressed in corneal epithelial cells (PubMed:17690104).		
Function	Catalytic activity:UDP-galactose + N-acetyl-D-glucosamine = UDP + N-acetyllactosamine.,cofactor:Manganese.,Function:Responsible for the synthesis of complex-type N-linked oligosaccharides in many glycoproteins as well as the carbohydrate moieties of glycolipids.,online information:Beta-1,4-galactosyltransferase 4,online information:GlycoGene database,pathway:Protein modification; protein glycosylation.,similarity:Belongs to the glycosyltransferase 7 family.,subcellular location:Trans cisternae of Golgi stack.,tissue specificity:High expression in heart, placenta, kidney and pancreas; lower in brain, colon, lung, muscle, ovary, testis and uterus.,		

Validation Data



Western blot analysis of lysates from U2OS cells, primary antibody was diluted at 1:1000, 4°over night

Contact information

Orders: order@immunoway.com
Support: tech@immunoway.com
Telephone: 877-594-3616 (Toll Free), 408-747-0185
Website: <http://www.immunoway.com>
Address: 2200 Ringwood Ave San Jose, CA 95131 USA



Please scan the QR code
to access additional
product information:
B4GT4 Rabbit pAb

For Research Use Only. Not for Use in Diagnostic Procedures.

[Antibody](#) | [ELISA Kits](#) | [Protein](#) | [Reagents](#)