

AK1C4 Rabbit pAb

CatalogNo: YN0429

Key Features

Host Species

- Rabbit

Reactivity

- Human

Applications

- WB,ELISA

MW

- 35kD (Observed)

Isotype

- IgG

Recommended Dilution Ratios

WB 1:500-2000

ELISA 1:5000-20000

Storage

Storage* -15°C to -25°C/1 year(Do not lower than -25°C)

Formulation Liquid in PBS containing 50% glycerol,0.5% BSA and 0.02% sodium azide.

Basic Information

Clonality Polyclonal

Immunogen Information

Immunogen Synthesized peptide derived from human protein . at AA range: 1-80

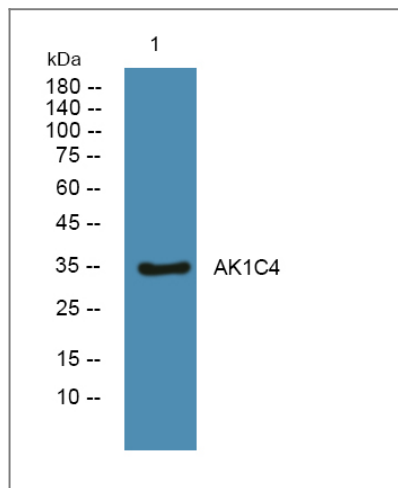
Specificity AK1C4 Polyclonal Antibody detects endogenous levels of protein.

Target Information

Gene name AKR1C4 CHDR

| | | | |
|------------------------------|--|-----------------------|-------------------------|
| Protein Name | Aldo-keto reductase family 1 member C4 (3-alpha-HSD1) (3-alpha-hydroxysteroid dehydrogenase type I) (Chlordecone reductase) (CDR) (Dihydrodiol dehydrogenase 4) (DD-4) (DD4) (HAKRA) | | |
| | Organism | Gene ID | UniProt ID |
| | Human | 1109; | P17516; |
| Cellular Localization | Cytoplasm, cytosol . | | |
| Tissue specificity | Liver specific. | | |
| Function | Catalytic activity:Androsterone + NAD(P)(+) = 5-alpha-androstane-3,17-dione + NAD(P)H.,Catalytic activity:Chlordecone alcohol + NADP(+) = chlordecone + NADPH.,Function:Catalyzes the transformation of the potent androgen dihydrotestosterone (DHT) into the less active form, 5-alpha-androstan-3-alpha,17-beta-diol (3-alpha-diol). Also has some 20-alpha-hydroxysteroid dehydrogenase activity. The biotransformation of the pesticide chlordecone (kepone) to its corresponding alcohol leads to increased biliary excretion of the pesticide and concomitant reduction of its neurotoxicity since bile is the major excretory route.,polymorphism:The allele with Cys-145/Val-311 shows a three- to five-fold decrease in catalytic efficiency for xenobiotic and steroidal substrates compared to the Ser-145/Leu-311 allele.,PTM:The N-terminus is blocked.,similarity:Belongs to the aldo/keto reductase family.,subunit:Monomer.,tissue specificity:Liver specific., | | |

| Validation Data



Western blot analysis of lysates from K562 cells, primary antibody was diluted at 1:1000, 4°over night

| Contact information

Orders: order@immunoway.com
 Support: tech@immunoway.com
 Telephone: 877-594-3616 (Toll Free), 408-747-0185
 Website: <http://www.immunoway.com>
 Address: 2200 Ringwood Ave San Jose, CA 95131 USA



Please scan the QR code
 to access additional
 product information:
AK1C4 Rabbit pAb

