

AWAT2 Rabbit pAb

CatalogNo: YN0396

Key Features

Host Species

- Rabbit

Reactivity

- Human, Mouse

Applications

- WB, ELISA

MW

- 36kD (Observed)

Isotype

- IgG

Recommended Dilution Ratios

WB 1:500-2000

ELISA 1:5000-20000

Storage

Storage* -15°C to -25°C/1 year (Do not lower than -25°C)

Formulation Liquid in PBS containing 50% glycerol, 0.5% BSA and 0.02% sodium azide.

Basic Information

Clonality Polyclonal

Immunogen Information

Immunogen Synthesized peptide derived from human protein . at AA range: 260-340

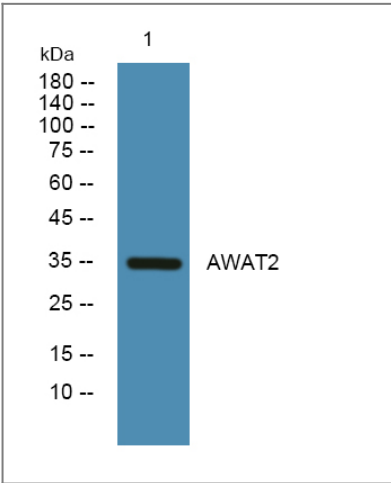
Specificity AWAT2 Polyclonal Antibody detects endogenous levels of protein.

Target Information

Gene name AWAT2 DC4 DGAT2L4 MFAT WS

Protein Name	Acyl-CoA wax alcohol acyltransferase 2 (Acyl-CoA retinol O-fatty-acyltransferase) (ARAT) (Retinol O-fatty-acyltransferase) (Diacylglycerol O-acyltransferase 2-like protein 4) (Diacylglycerol O-acyltransferase candidate 4) (hDC4) (Long-chain-alcohol O-fatty-acyltransferase 2) (Multifunctional O-acyltransferase) (Wax synthase) (hWS)		
	Organism	Gene ID	UniProt ID
	Human	158835;	Q6E213;
	Mouse		Q6E1M8;
Cellular Localization	Endoplasmic reticulum membrane ; Multi-pass membrane protein .		
Tissue specificity	Highly expressed in skin, where it is primarily restricted to undifferentiated peripheral sebocytes. Also expressed at lower level in other tissues except pancreas.		
Function	Catalytic activity:Acyl-CoA + a long-chain alcohol = CoA + a long-chain ester.,Function:Acyltransferase that predominantly esterify long chain (wax) alcohols with acyl-CoA-derived fatty acids to produce wax esters. Wax esters are enriched in sebum, suggesting that it plays a central role in lipid metabolism in skin. Has no activity using decyl alcohol and significantly prefers the C16 and C18 alcohols. May also have 2-acylglycerol O-acyltransferase (MGAT) and acyl-CoA:retinol acyltransferase (ARAT) activities, to catalyze the synthesis of diacylglycerols and retinyl esters; however this activity is unclear in vivo.,similarity:Belongs to the diacylglycerol acyltransferase family.,tissue specificity:Abundant in tissues rich in sebaceous glands such as the preputial gland and eyelid. Highly expressed in skin, where it is primarily restricted to undifferentiated peripheral sebocytes. Also expressed at lower level in other tissues except pancreas.,		

Validation Data



Western blot analysis of lysates from U2OS cells, primary antibody was diluted at 1:1000, 4°over night

Contact information

Orders: order@immunoway.com
Support: tech@immunoway.com
Telephone: 877-594-3616 (Toll Free), 408-747-0185
Website: http://www.immunoway.com
Address: 2200 Ringwood Ave San Jose, CA 95131 USA



Please scan the QR code
to access additional
product information:
AWAT2 Rabbit pAb

For Research Use Only. Not for Use in Diagnostic Procedures.

[Antibody](#) | [ELISA Kits](#) | [Protein](#) | [Reagents](#)