

RS4Y2 Rabbit pAb

CatalogNo: YN0369

Key Features

Host Species

- Rabbit

Reactivity

- Human

Applications

- WB,ELISA

MW

- 28kD (Observed)

Isotype

- IgG

Storage

Storage* -15°C to -25°C/1 year(Do not lower than -25°C)

Formulation Liquid in PBS containing 50% glycerol,0.5% BSA and 0.02% sodium azide.

Recommended Dilution Ratios

WB 1:500-2000

ELISA 1:5000-20000

Basic Information

Clonality Polyclonal

Immunogen Information

Immunogen Synthesized peptide derived from human protein . at AA range: 50-130

Specificity RS4Y2 Polyclonal Antibody detects endogenous levels of protein.

Target Information

Gene name RPS4Y2 RPS4Y2P

Protein Name 40S ribosomal protein S4, Y isoform 2

Organism

Human

Gene ID

[140032;](#)

UniProt ID

[Q8TD47;](#)

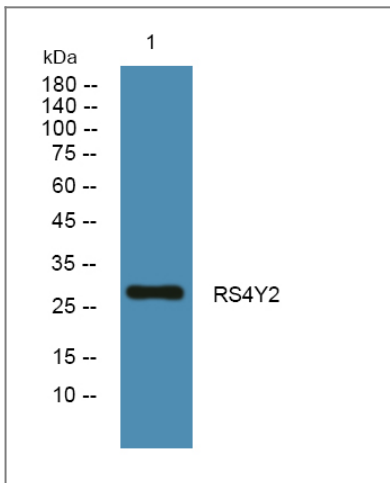
Cellular Localization

cytosolic small ribosomal subunit,

Function

miscellaneous:This isoform is encoded on the Y chromosome.,similarity:Belongs to the ribosomal protein S4e family.,similarity:Contains 1 S4 RNA-binding domain.,

Validation Data



Western blot analysis of lysates from K562 cells, primary antibody was diluted at 1:1000, 4°over night

Contact information

Orders: order@immunoway.com
Support: tech@immunoway.com
Telephone: 877-594-3616 (Toll Free), 408-747-0185
Website: <http://www.immunoway.com>
Address: 2200 Ringwood Ave San Jose, CA 95131 USA



Please scan the QR code to access additional product information:
RS4Y2 Rabbit pAb

For Research Use Only. Not for Use in Diagnostic Procedures.

[Antibody](#) | [ELISA Kits](#) | [Protein](#) | [Reagents](#)