

RS26L Rabbit pAb

CatalogNo: YN0367

Key Features

Host Species

- Rabbit

Reactivity

- Human

Applications

- WB,ELISA

MW

- 12kD (Observed)

Isotype

- IgG

Storage

Storage* -15°C to -25°C/1 year(Do not lower than -25°C)**Formulation** Liquid in PBS containing 50% glycerol,0.5% BSA and 0.02% sodium azide.

Recommended Dilution Ratios

WB 1:500-2000**ELISA 1:5000-20000**

Basic Information

Clonality Polyclonal

Immunogen Information

Immunogen Synthesized peptide derived from human protein . at AA range: 30-110**Specificity** RS26L Polyclonal Antibody detects endogenous levels of protein.

Target Information

Gene name RPS26P11 RPS26L1

Protein Name Putative 40S ribosomal protein S26-like 1

Organism

Gene ID

UniProt ID

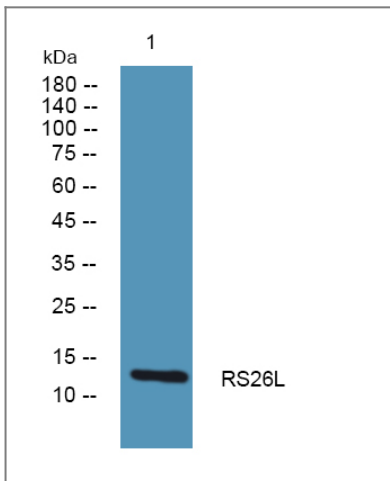
Human

[Q5JNZ5](#);

Cellular Localization cytosolic small ribosomal subunit,

Function Caution:Could be the product of a pseudogene.,similarity:Belongs to the ribosomal protein S26e family.,

Validation Data



Western blot analysis of lysates from HCT116 cells, primary antibody was diluted at 1:1000, 4° over night

Contact information

Orders: order@immunoway.com
Support: tech@immunoway.com
Telephone: 877-594-3616 (Toll Free), 408-747-0185
Website: <http://www.immunoway.com>
Address: 2200 Ringwood Ave San Jose, CA 95131 USA



Please scan the QR code to access additional product information:
RS26L Rabbit pAb

For Research Use Only. Not for Use in Diagnostic Procedures.

[Antibody](#) | [ELISA Kits](#) | [Protein](#) | [Reagents](#)