

RS17 Rabbit pAb

CatalogNo: YN0365

Key Features

Host Species

- Rabbit

Reactivity

- Human, Mouse, Rat

Applications

- WB, ELISA

MW

- 14kD (Observed)

Isotype

- IgG

Storage

Storage* -15°C to -25°C/1 year (Do not lower than -25°C)**Formulation** Liquid in PBS containing 50% glycerol, 0.5% BSA and 0.02% sodium azide.

Recommended Dilution Ratios

WB 1:500-2000**ELISA 1:5000-20000**

Basic Information

Clonality Polyclonal

Immunogen Information

Immunogen Synthesized peptide derived from human protein . at AA range: 30-110**Specificity** RS17 Polyclonal Antibody detects endogenous levels of protein.

Target Information

Gene name RPS17

Protein Name 40S ribosomal protein S17

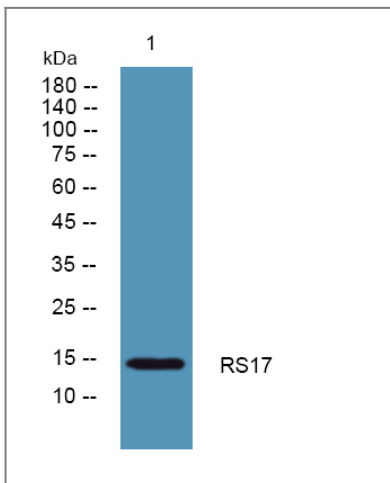
Organism	Gene ID	UniProt ID
Human	100505503 ;	P08708 ;
Mouse		P63276 ;
Rat		P04644 ;

Cellular Localization nucleoplasm,cytosol,ribosome,focal adhesion,membrane,cytosolic small ribosomal subunit,extracellular matrix,extracellular exosome,

Tissue specificity B-cell,Kidney,Lung,Pancreas,Placenta,Prostate,Salivary gland,

Function Disease:Defects in RPS17 are the cause of Diamond-Blackfan anemia type 4 (DBA4) [MIM:612527]. DBA4 is a form of Diamond-Blackfan anemia, a congenital non-regenerative hypoplastic anemia that usually presents early in infancy. Diamond-Blackfan anemia is characterized by a moderate to severe macrocytic anemia, erythroblastopenia, and an increased risk of malignancy. 30 to 40% of Diamond-Blackfan anemia patients present with short stature and congenital anomalies, the most frequent being craniofacial (Pierre-Robin syndrome and cleft palate), thumb and urogenital anomalies.,similarity:Belongs to the ribosomal protein S17e family.,

Validation Data



Western blot analysis of lysates from Jurkat cells, primary antibody was diluted at 1:1000, 4° over night

Contact information

Orders: order@immunoway.com
Support: tech@immunoway.com
Telephone: 877-594-3616 (Toll Free), 408-747-0185
Website: <http://www.immunoway.com>
Address: 2200 Ringwood Ave San Jose, CA 95131 USA



Please scan the QR code to access additional product information:
RS17 Rabbit pAb

