

RM55 Rabbit pAb

CatalogNo: YN0361

| Key Features

Host Species

- Rabbit

Reactivity

- Human, Mouse

Applications

- WB, ELISA

MW

- 14kD (Observed)

Isotype

- IgG

| Recommended Dilution Ratios

WB 1:500-2000

ELISA 1:5000-20000

| Storage

Storage* -15°C to -25°C/1 year (Do not lower than -25°C)

Formulation Liquid in PBS containing 50% glycerol, and 0.02% sodium azide.

| Basic Information

Clonality Polyclonal

| Immunogen Information

Immunogen Synthesized peptide derived from human protein . at AA range: 30-110

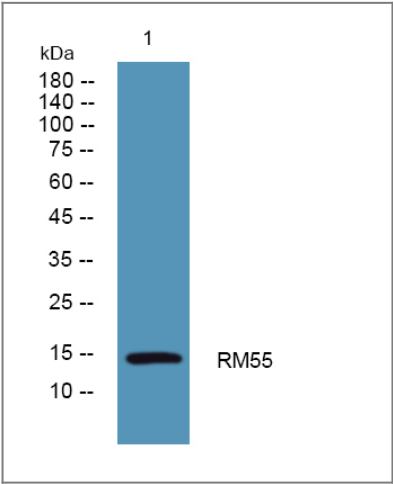
Specificity RM55 Polyclonal Antibody detects endogenous levels of protein.

| Target Information

Gene name MRPL55 UNQ5835/PRO19675

Protein Name	39S ribosomal protein L55, mitochondrial (L55mt) (MRP-L55)		
	Organism	Gene ID	UniProt ID
	Human	128308;	Q7Z7F7;
	Mouse		Q9CZ83;
Cellular Localization	Mitochondrion .		
Tissue specificity	Brain,		
Function	subunit:Component of the mitochondrial ribosome large subunit (39S) which comprises a 16S rRNA and about 50 distinct proteins.,		

| Validation Data



Western blot analysis of lysates from K562 cells, primary antibody was diluted at 1:1000, 4°over night

| Contact information

Orders: order@immunoway.com
Support: tech@immunoway.com
Telephone: 877-594-3616 (Toll Free), 408-747-0185
Website: http://www.immunoway.com
Address: 2200 Ringwood Ave San Jose, CA 95131 USA



Please scan the QR code to access additional product information:
RM55 Rabbit pAb